

# MESSAGE IN A BOTTLE

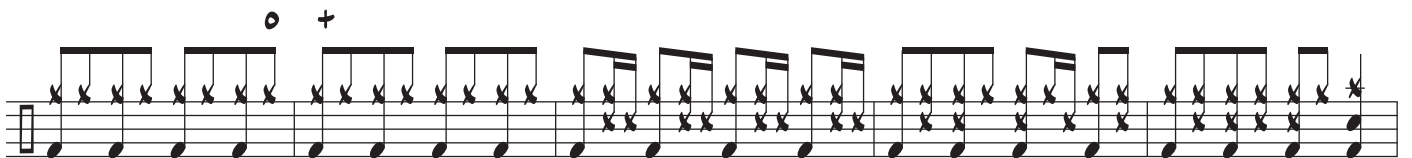
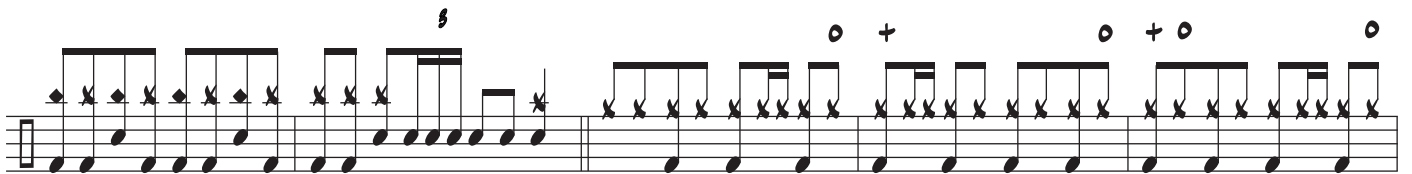
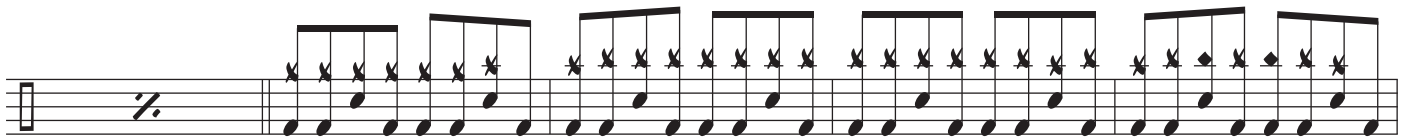
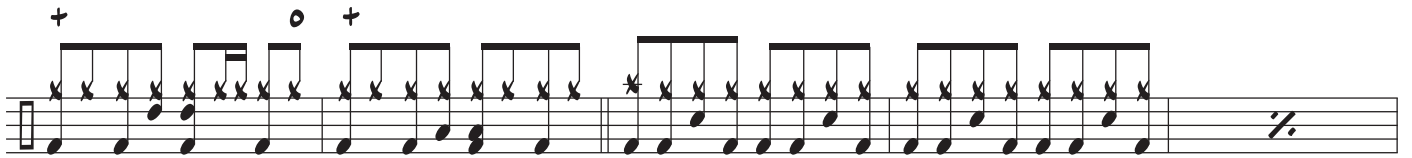
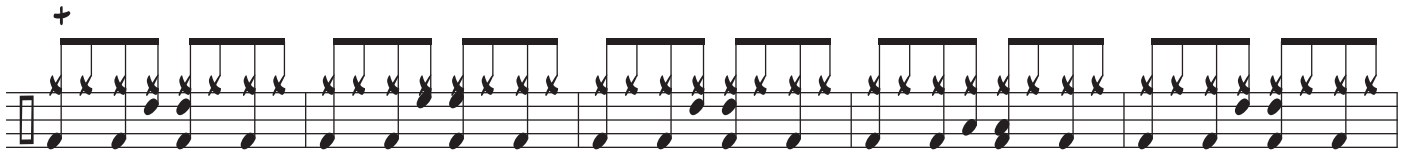
DRUM SET

The drum notation is written on seven staves. The first staff begins with a common time signature (C) and contains a series of eighth-note patterns with accents (x) and some notes marked with circles (o) and plus signs (+). The second staff features a 4-measure phrase with a slash (/) indicating a repeat, followed by a measure with a circled 4 (4) above it. The third staff includes first and second endings, marked with '1' and '2' above the notes. The fourth staff contains three measures marked with a circled phi symbol (φ). The fifth staff has a circled 3 (3) above a triplet of notes and a circled plus sign (+) above a note. The sixth staff has circled plus signs (+) above notes. The seventh staff ends with a circled note (o) above the final note.

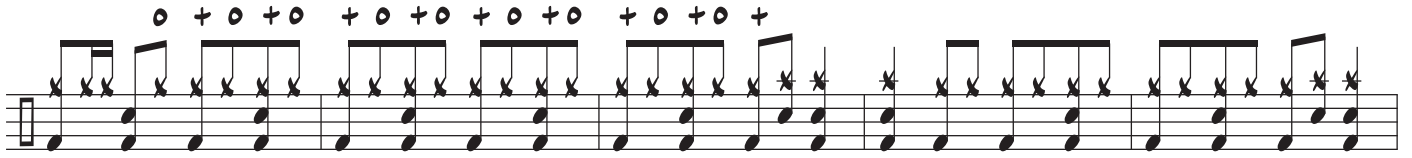
© ROB FERRELL DRUM STUDIO 2020

ALL RIGHTS RESERVED

WWW.ROBERTFERRELL.COM

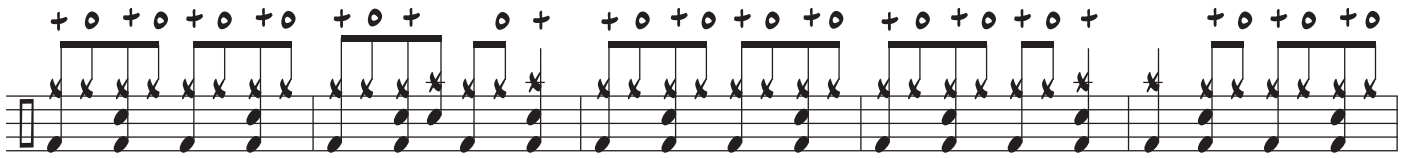


o + o + o + o + o + o + o + o +




A musical staff with a treble clef and a key signature of one flat. It features a series of rhythmic patterns represented by 'x' marks above the staff. The notes are mostly eighth and sixteenth notes, often beamed together. Above the staff, there are rhythmic symbols: a circle with a dot (o) and a plus sign (+). The first measure has 'o + o + o', followed by 'o + o + o + o + o + o + o + o +'. The staff ends with a double bar line.

+ o + o + o + o + o + o + o + o + o + o + o + o +



A musical staff with a treble clef and a key signature of one flat. It features a series of rhythmic patterns represented by 'x' marks above the staff. The notes are mostly eighth and sixteenth notes, often beamed together. Above the staff, there are rhythmic symbols: a plus sign (+) and a circle with a dot (o). The first measure has '+ o + o + o + o + o + o + o + o + o + o + o + o +'. The staff ends with a double bar line.

o +



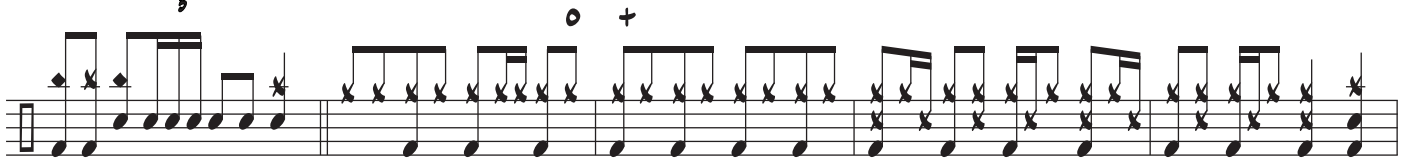
A musical staff with a treble clef and a key signature of one flat. It features a series of rhythmic patterns represented by 'x' marks above the staff. The notes are mostly eighth and sixteenth notes, often beamed together. Above the staff, there are rhythmic symbols: a circle with a dot (o) and a plus sign (+). The first measure has 'o +'. The staff ends with a double bar line.



A musical staff with a treble clef and a key signature of one flat. It features a series of rhythmic patterns represented by 'x' marks above the staff. The notes are mostly eighth and sixteenth notes, often beamed together. The staff ends with a double bar line.

s

o +



A musical staff with a treble clef and a key signature of one flat. It features a series of rhythmic patterns represented by 'x' marks above the staff. The notes are mostly eighth and sixteenth notes, often beamed together. Above the staff, there are rhythmic symbols: a 's' and a circle with a dot (o) and a plus sign (+). The first measure has 's'. The staff ends with a double bar line.

o +



A musical staff with a treble clef and a key signature of one flat. It features a series of rhythmic patterns represented by 'x' marks above the staff. The notes are mostly eighth and sixteenth notes, often beamed together. Above the staff, there are rhythmic symbols: a circle with a dot (o) and a plus sign (+). The staff ends with a double bar line.

o + o +



A musical staff with a treble clef and a key signature of one flat. It features a series of rhythmic patterns represented by 'x' marks above the staff. The notes are mostly eighth and sixteenth notes, often beamed together. Above the staff, there are rhythmic symbols: a circle with a dot (o) and a plus sign (+). The first measure has 'o + o +'. The staff ends with a double bar line.

o +



A musical staff with a treble clef and a key signature of one flat. It features a series of rhythmic patterns represented by 'x' marks above the staff. The notes are mostly eighth and sixteenth notes, often beamed together. Above the staff, there are rhythmic symbols: a circle with a dot (o) and a plus sign (+). The staff ends with a double bar line.

o +



A musical staff with a treble clef and a key signature of one flat. It features a series of rhythmic patterns represented by 'x' marks above the staff. The notes are mostly eighth and sixteenth notes, often beamed together. Above the staff, there are rhythmic symbols: a circle with a dot (o) and a plus sign (+). The staff ends with a double bar line.

