

# MAN OVERBOARD

DRUM SET

CLOSED HI HAT

8

12 (4) (8)

18 (12)

HALF OPEN HI HAT

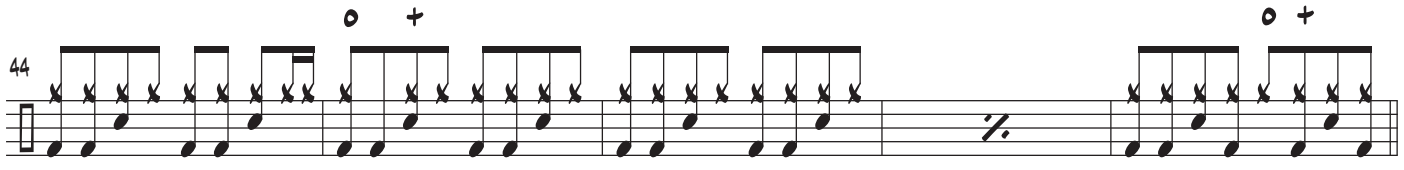
24

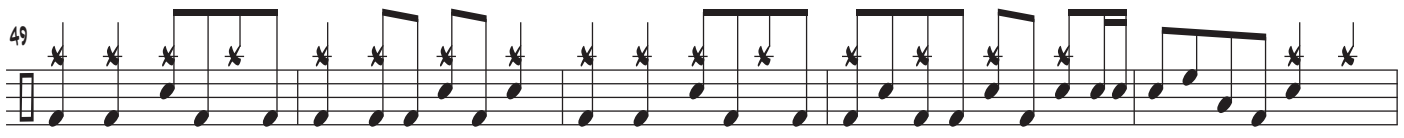
29

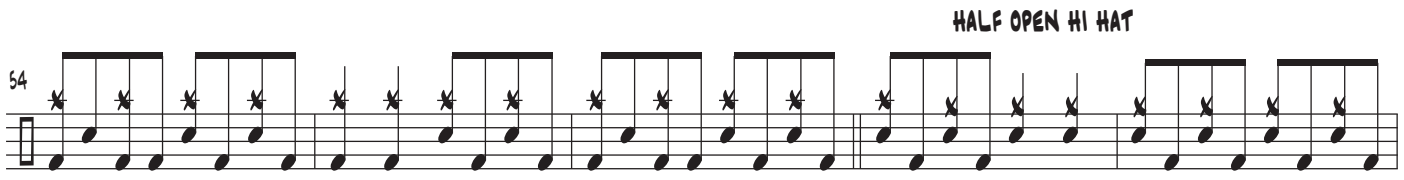
34

CLOSED HI HAT

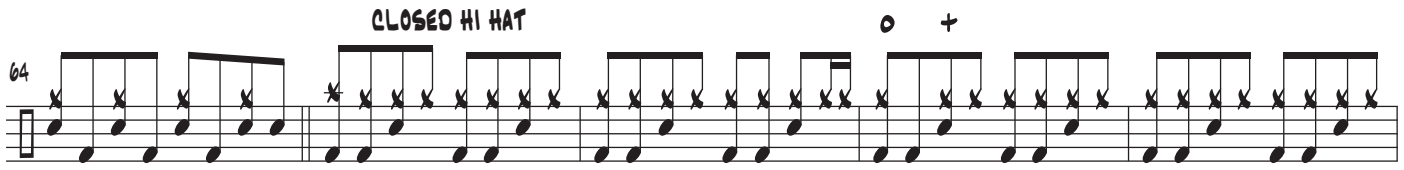
39

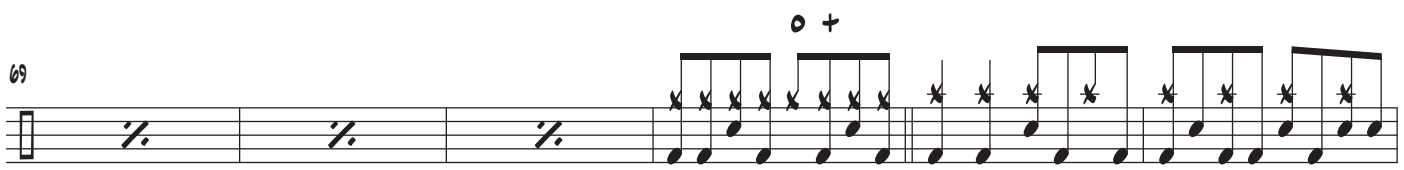
44 

49 

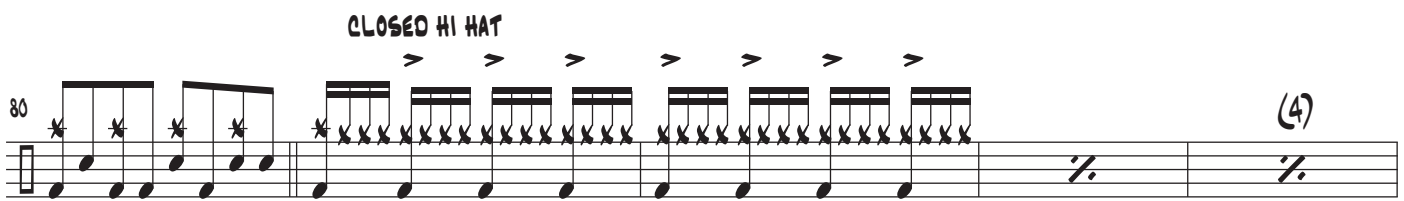
54 

59 

64 

69 

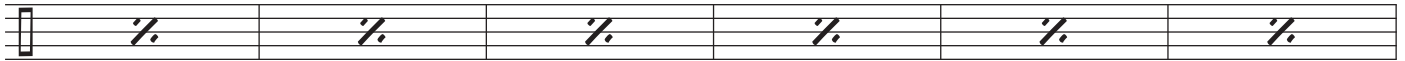
75 

80 

85 

90

(4)



HALF OPEN HI HAT



REPEAT 3X

HALF OPEN HI HAT

