

# INFECTED

ROB FERRELL

$\bullet = 121$

## INTRO

DRUM SET

Musical notation for the first staff of the drum set, starting with a common time signature (C) and a star symbol. The notation consists of a series of eighth notes with 'x' marks above them, indicating a specific drum pattern.

Musical notation for the second staff of the drum set, continuing the pattern of eighth notes with 'x' marks.

5

Musical notation for the third staff of the drum set, continuing the pattern of eighth notes with 'x' marks.

10

## VERSE

Musical notation for the fourth staff of the drum set, starting the verse section. It features a change in the drum pattern, with some notes marked with a star and a wedge-shaped symbol above them.

15

Musical notation for the fifth staff of the drum set, continuing the verse section.

20

## PRECHORUS

## CHORUS

Musical notation for the sixth staff of the drum set, including a 4x repeat sign and a double bar line. The notation shows a change in the drum pattern, with some notes marked with a star and a diamond symbol above them.

25

Musical notation for the seventh staff of the drum set, continuing the prechorus and chorus sections.

30

VERSE

35

PRECHORUS

40

CHORUS

45

BRIDGE

50

2x

55

SOLO

59

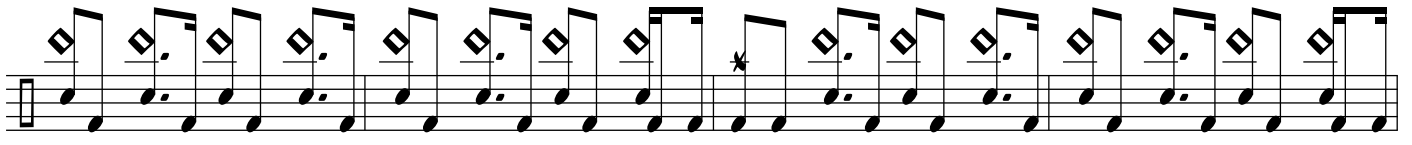
6x

63

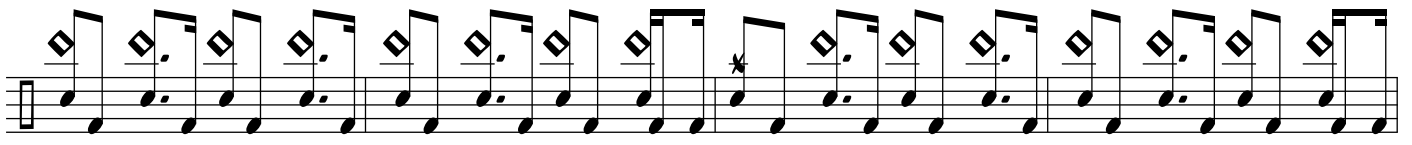
CHORUS/OUTRO

67

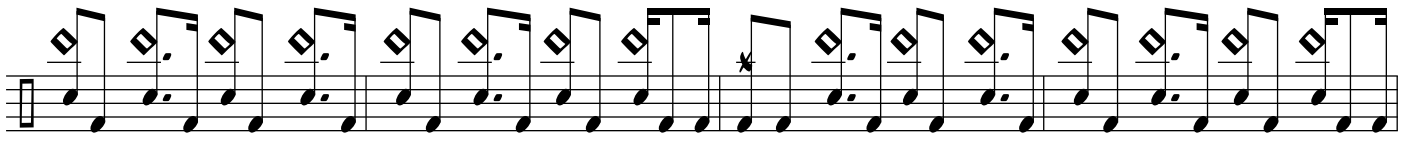
71



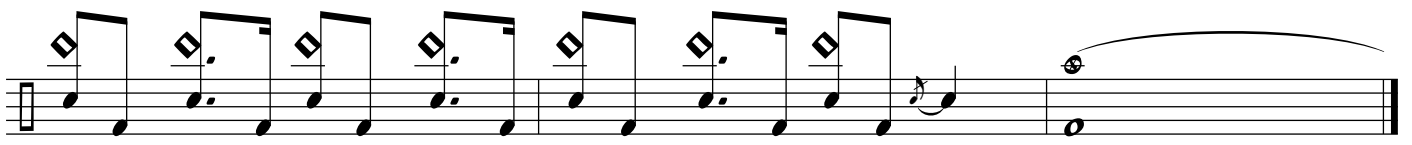
75



79



83



87