

EVERYTHING

DRUM SET

Measures 1-4: Four measures of music in common time (C). Each measure contains a series of eighth notes with 'x' marks above them, indicating a specific drum sound. A circled 'C' is at the beginning of the first measure. A star symbol is above the first note of the first measure. A circled 'o' is above the eighth note of the fourth measure.

Measures 5-8: Measures 5-7 continue with eighth notes and 'x' marks. Measure 8 features a different rhythmic pattern with quarter notes and eighth notes. A plus sign is above the first note of measure 5. A circled 'o' is above the eighth note of measure 7. A plus sign is above the first note of measure 8.

5

Measures 9-12: Measures 9-12 feature a pattern of quarter notes with 'x' marks above them, indicating a specific drum sound.

10

Measures 13-15: Measures 13-15 feature a pattern of eighth notes with 'x' marks above them, indicating a specific drum sound.

16

Measures 16-20: Measures 16-20 feature a pattern of eighth notes with 'x' marks above them, indicating a specific drum sound.

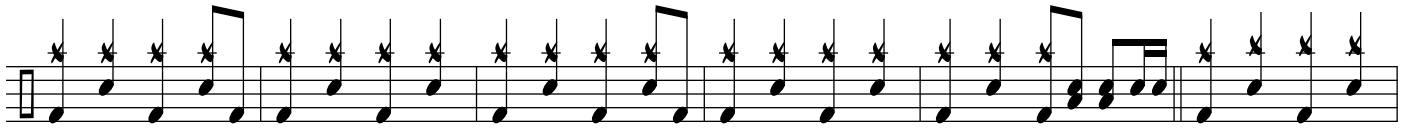
21

Measures 21-25: Measures 21-25 feature a pattern of eighth notes with 'x' marks above them, indicating a specific drum sound.

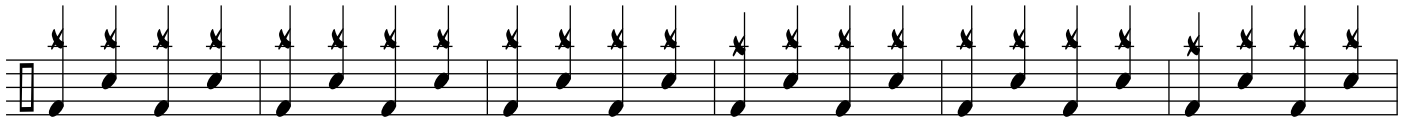
26

Measures 26-31: Measures 26-31 feature a pattern of eighth notes with 'x' marks above them, indicating a specific drum sound. Measure 26 has a first ending bracket labeled '1' above it. Measure 27 has a second ending bracket labeled '2' above it.

32



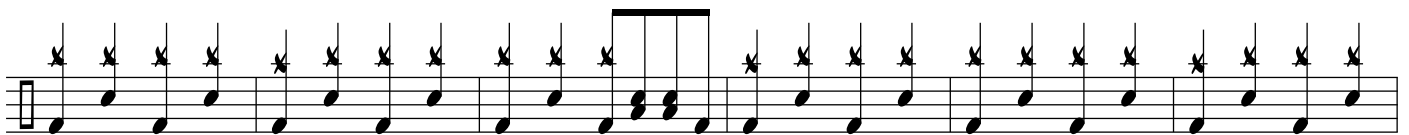
37



43



49



55



61



67



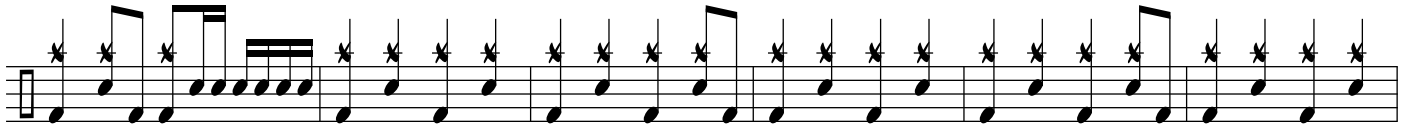
73



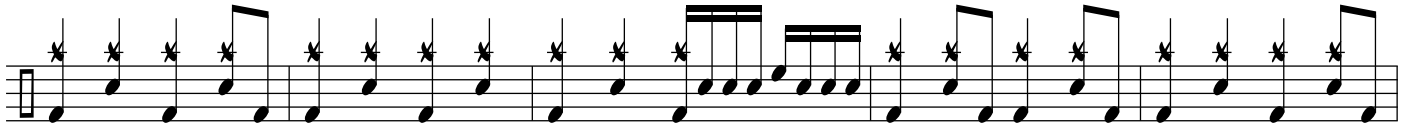
78



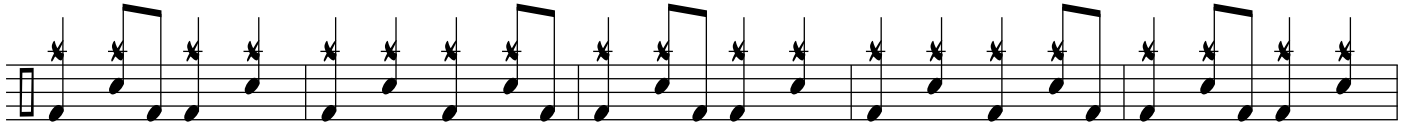
85



89



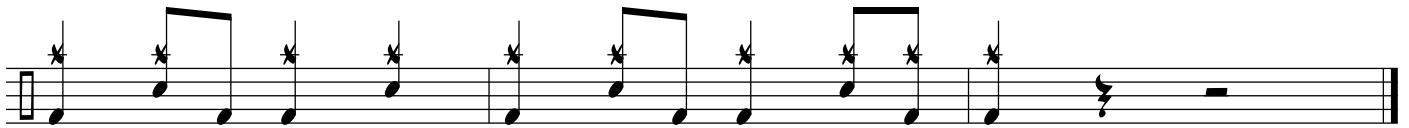
95



100



105



110