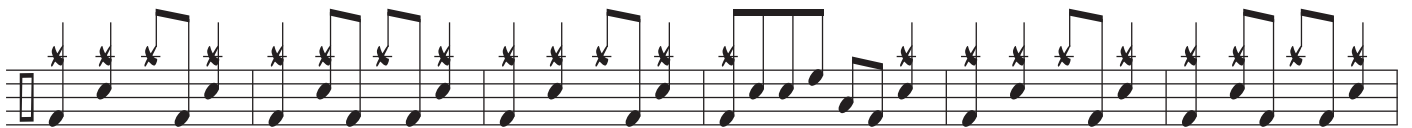
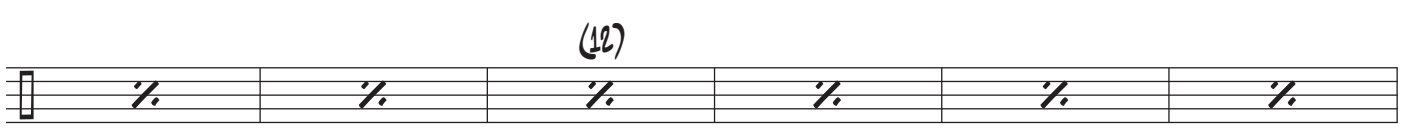
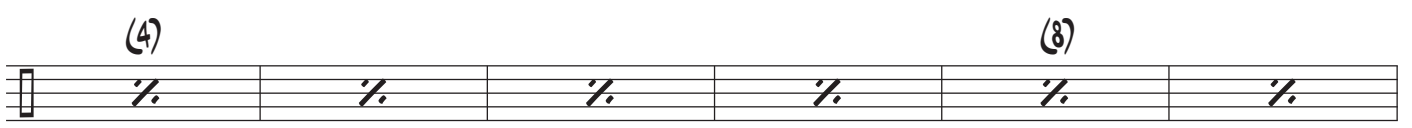
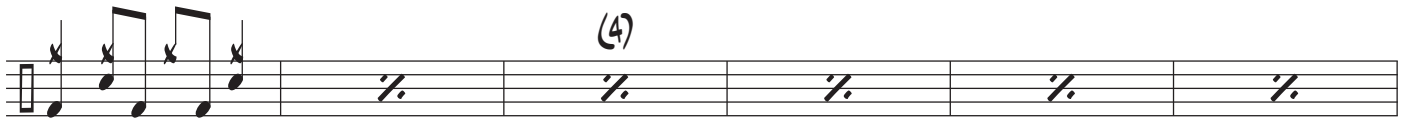


# BOYS OF SUMMER

DRUM SET

The drum set notation is presented on seven staves. The first staff begins with a common time signature (C) and contains a series of rhythmic patterns represented by 'x' marks on a five-line staff. The second staff continues with similar patterns, including repeat signs. The third staff shows a pattern starting with a quarter note followed by 'x' marks. The fourth staff features a melodic line with eighth notes and quarter notes, with a circled '4' above the final measure. The fifth staff consists of six measures, each containing a repeat sign, with a circled '8' above the third measure. The sixth staff starts with a circled '12' above the first measure, followed by four measures with repeat signs, and then a melodic line with eighth notes and quarter notes. The seventh staff continues with a melodic line of eighth notes and quarter notes.



A musical staff with a treble clef and a common time signature. It contains a sequence of rhythmic notes, primarily quarter notes and eighth notes, with asterisks placed above several notes.

A musical staff with a treble clef and a common time signature. It features a sequence of rhythmic notes, including eighth notes and sixteenth notes, with asterisks and accents (>) above the notes.

A musical staff with a treble clef and a common time signature. It contains a sequence of rhythmic notes, including eighth notes and sixteenth notes, with asterisks and accents (>) above the notes. There are two measures with a slash and a percent sign (%).

A musical staff with a treble clef and a common time signature. It contains a sequence of rhythmic notes, including quarter notes and eighth notes, with asterisks above the notes. There are two measures with a slash and a percent sign (%).

A musical staff with a treble clef and a common time signature. It contains a sequence of rhythmic notes, including quarter notes and eighth notes, with asterisks above the notes. There are two measures with a slash and a percent sign (%).

A musical staff with a treble clef and a common time signature. It contains a sequence of rhythmic notes, including quarter notes and eighth notes, with asterisks above the notes. There are two measures with a slash and a percent sign (%).

A musical staff with a treble clef and a common time signature. It contains six measures, each with a slash and a percent sign (%). Above the second measure is a circled number (4), and above the sixth measure is a circled number (8).

A musical staff with a treble clef and a common time signature. It contains six measures, each with a slash and a percent sign (%). Above the fourth measure is a circled number (12).

A musical staff with a treble clef and a common time signature. It contains a sequence of rhythmic notes, including quarter notes and eighth notes, with asterisks above the notes. There are two measures with a slash and a percent sign (%).

