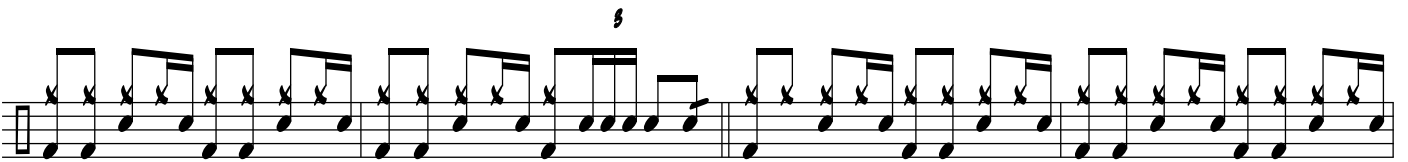


BOTH ENDS BURNING

DRUM SET



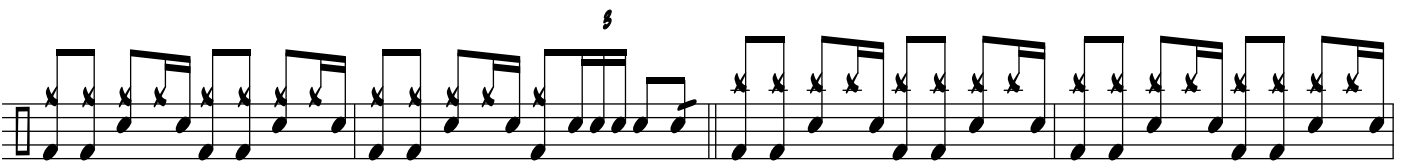
6



11



15



19



23



27

5

31

This staff contains measures 31 through 34. It begins with a treble clef and a key signature of one flat. The music consists of eighth-note patterns with 'x' marks above them, indicating fingerings. A fermata is placed over the final note of measure 34.

35

This staff contains measures 35 through 38, continuing the eighth-note rhythmic pattern with 'x' marks above the notes.

39

This staff contains measures 39 through 43. The rhythmic pattern continues, with a slight change in the note sequence in measure 40.

5

44

This staff contains measures 44 through 47. It features a fermata over the final note of measure 44. The rhythmic pattern continues with 'x' marks above the notes.

5

48

This staff contains measures 48 through 51. The rhythmic pattern continues with 'x' marks above the notes.

52

This staff contains measures 52 through 55, continuing the eighth-note rhythmic pattern with 'x' marks above the notes.

5

56

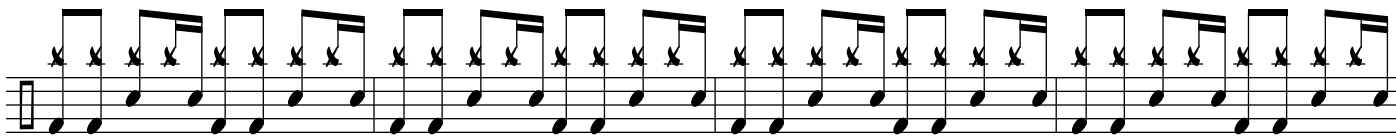
This staff contains measures 56 through 59. It features a fermata over the final note of measure 56. The rhythmic pattern continues with 'x' marks above the notes.

60

This staff contains measures 60 through 63, continuing the eighth-note rhythmic pattern with 'x' marks above the notes.

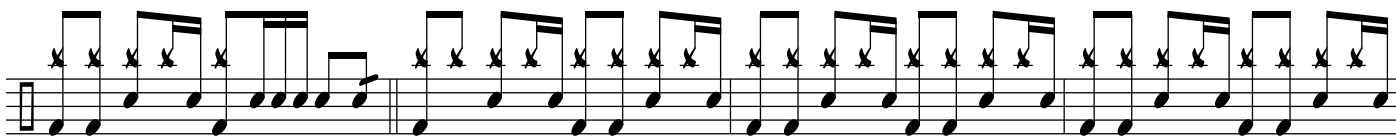
64

This staff contains measures 64 through 67, continuing the eighth-note rhythmic pattern with 'x' marks above the notes.



68

5



72



76



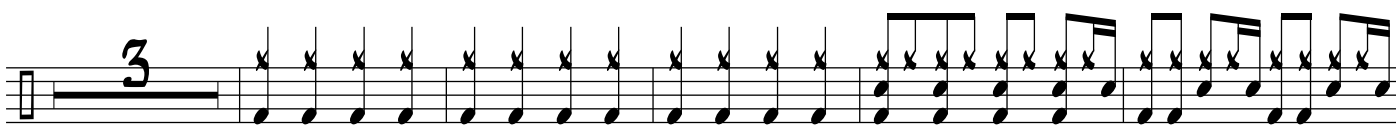
80

5

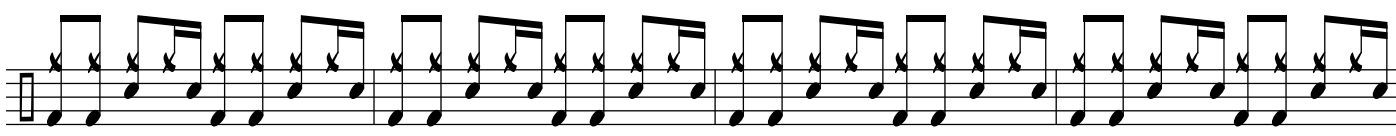


84

3

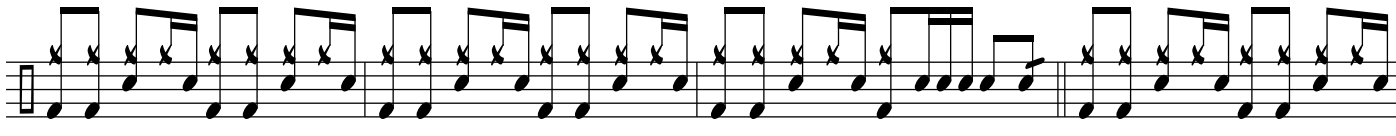


88

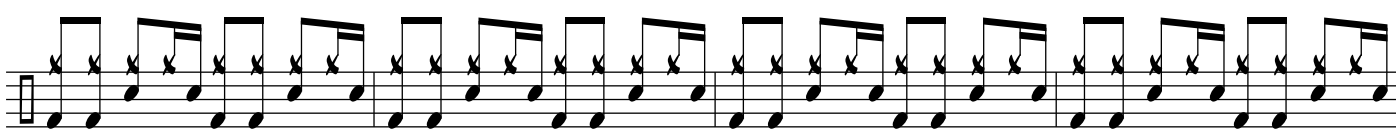


92

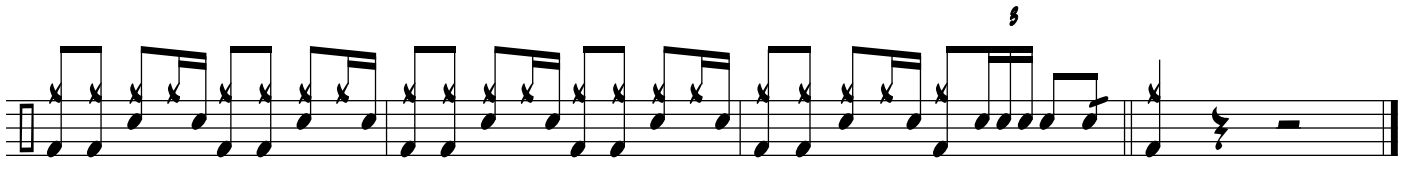
5



96



100



110