

SUNDAY BLOODY SUNDAY

(ROB FERRELL)

DRUM SET

The first staff of the drum set part begins with a common time signature (C) and a 7/8 time signature. It features a complex rhythmic pattern with various note values and rests.

5

The second staff of the drum set part continues the rhythmic pattern from the first staff, featuring various note values and rests.

9

The third staff of the drum set part continues the rhythmic pattern and ends with a double bar line and a repeat sign.

13

The fourth staff of the drum set part starts with a repeat sign and continues the rhythmic pattern.

16

The fifth staff of the drum set part continues the rhythmic pattern.

20

The sixth staff of the drum set part continues the rhythmic pattern and ends with a double bar line and a repeat sign.

23

The seventh staff of the drum set part continues the rhythmic pattern.

27

31

35

39

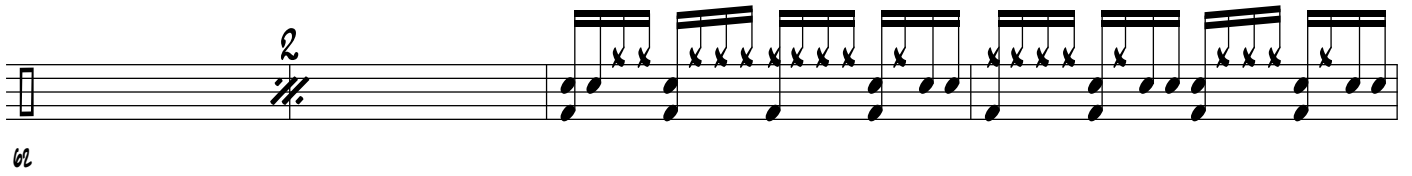
42

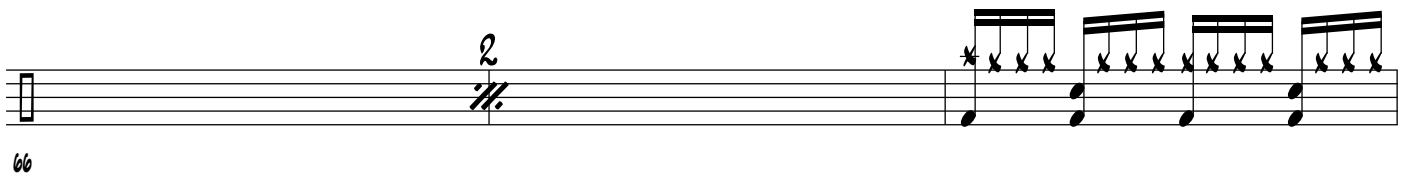
46

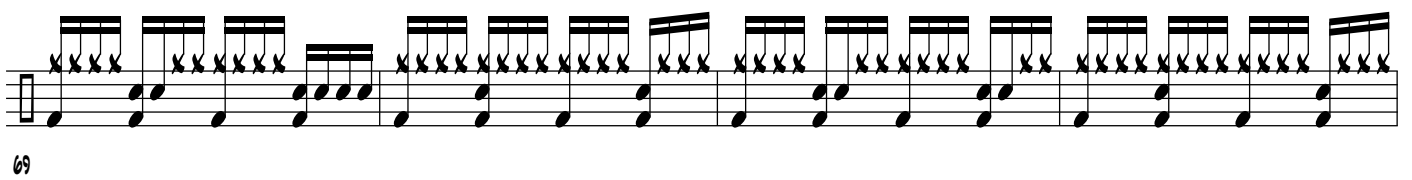
50

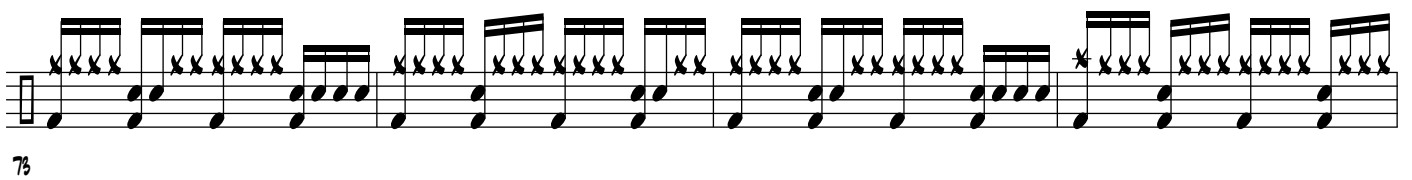
54

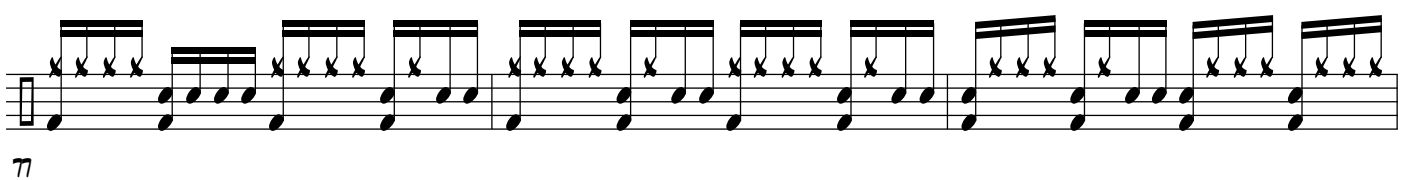
58

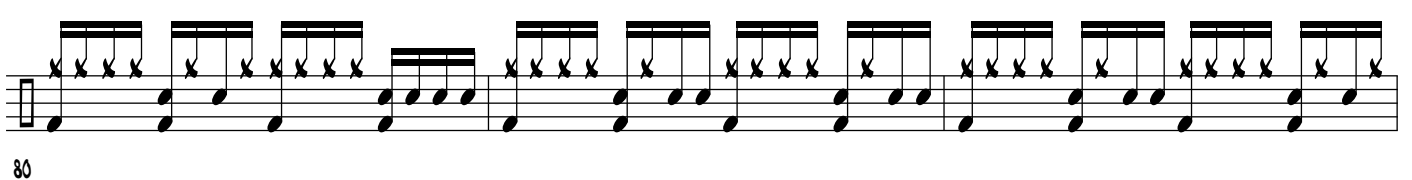
62 

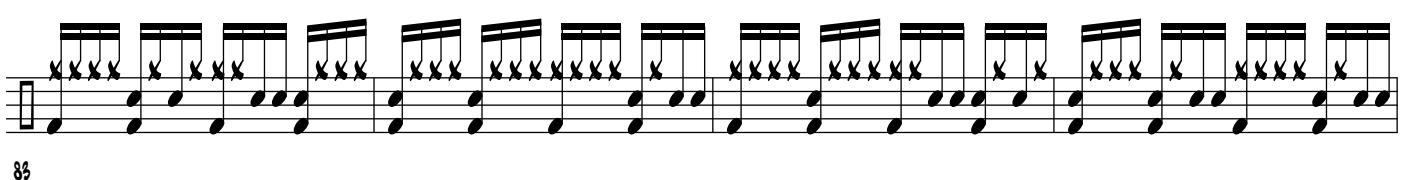
66 

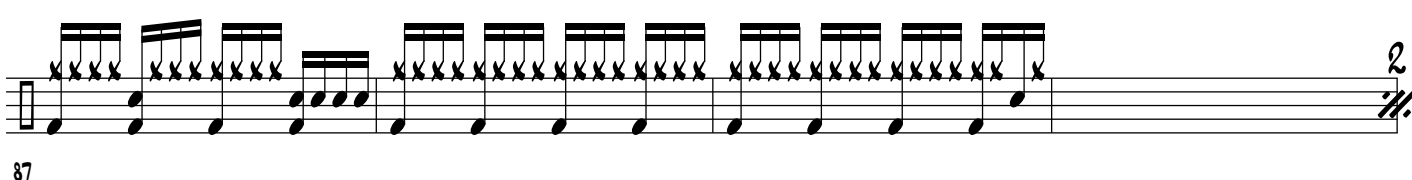
69 

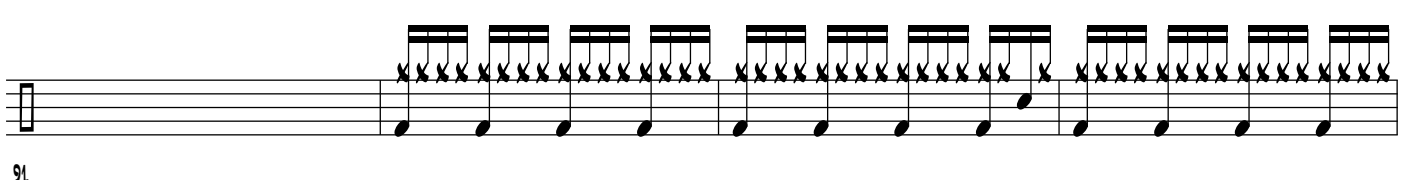
73 

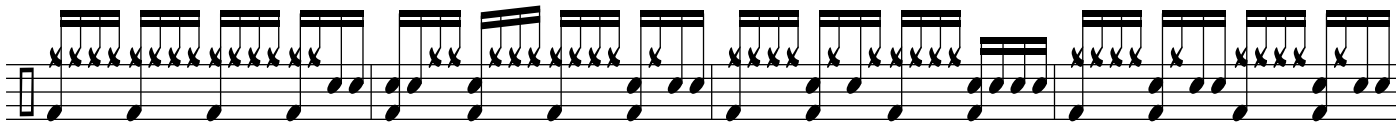
77 

80 

83 

87 

91 



95



99



102



105



108



111



114