

STAY

CYMBAL TRILLS

DRUM SET

Musical notation for the first staff, featuring cymbal trills. The staff begins with a common time signature (C) and a cymbal icon. The notation consists of a series of eighth notes with trill symbols (asterisks) above them, indicating cymbal trills. A dynamic accent (>) is placed above the eighth note in the third measure.

Musical notation for the second staff, including a double bar line. The notation continues with cymbal trills and includes a snare drum icon at the beginning of the staff.

Musical notation for the third staff, starting at measure 4. The notation continues with cymbal trills and includes a snare drum icon at the beginning of the staff.

Musical notation for the fourth staff, starting at measure 7. The notation continues with cymbal trills and includes a snare drum icon at the beginning of the staff.

Musical notation for the fifth staff, starting at measure 10. The notation continues with cymbal trills and includes a snare drum icon at the beginning of the staff.

Musical notation for the sixth staff, starting at measure 14. The notation continues with cymbal trills and includes a snare drum icon at the beginning of the staff.

Musical notation for the seventh staff, starting at measure 18. The notation continues with cymbal trills and includes a snare drum icon at the beginning of the staff.

Musical notation for the eighth staff, starting at measure 22. The notation continues with cymbal trills and includes a snare drum icon at the beginning of the staff.

HALF OPEN HI HAT

CLOSED HI HAT

○ + ○ + ○ +

26

29

HALF OPEN HI HAT

32

36

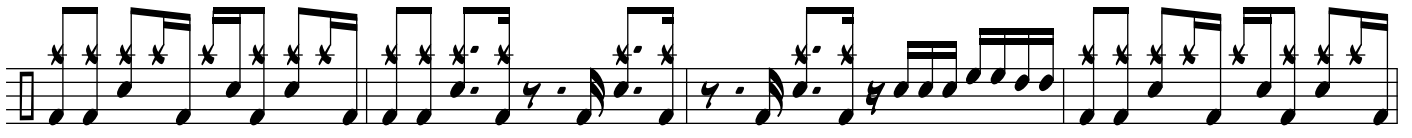
40

44

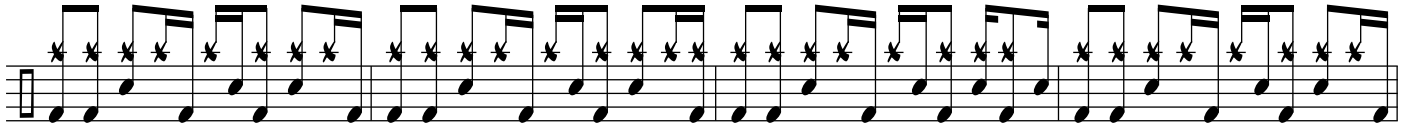
49

54

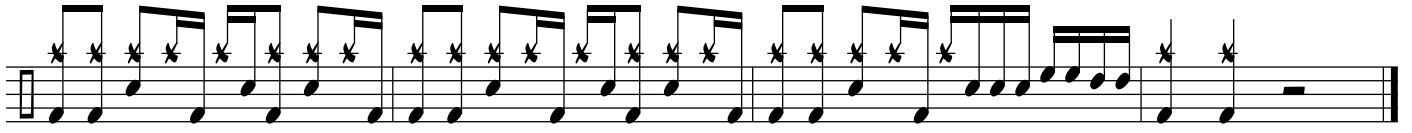
58



62



66



70