

# MAKING BELIEVE

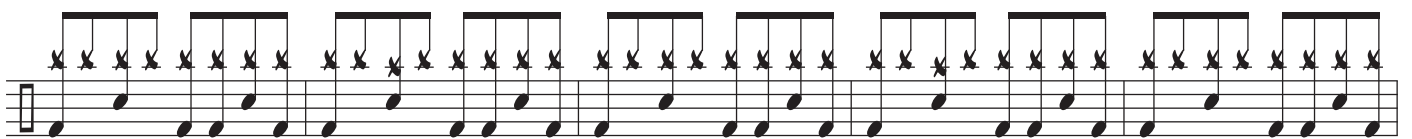
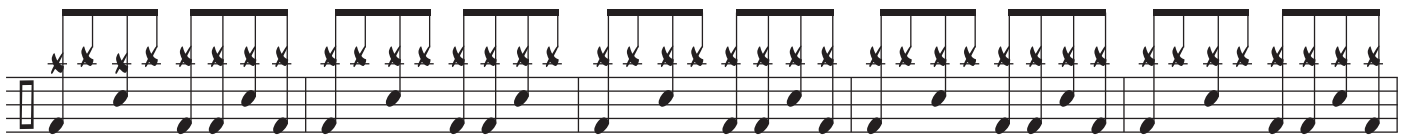
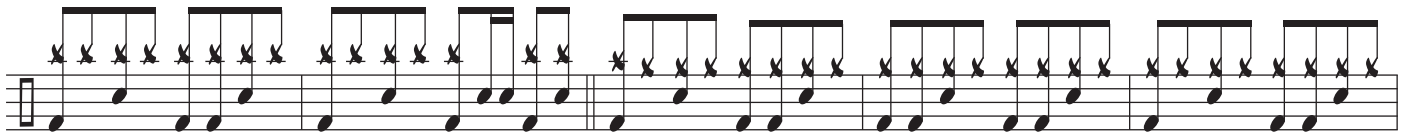
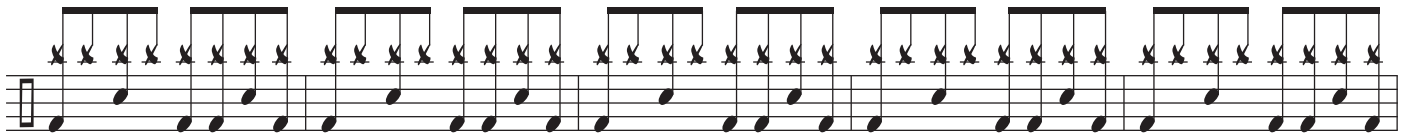
DRUM SET

The image displays a drum set score for the song "Making Believe". The notation is written on a single staff with a common time signature (C). The score is organized into eight measures, each containing a series of rhythmic patterns. The first measure begins with a repeat sign and a common time signature. The notation uses 'x' marks to indicate specific drum hits, with stems and beams connecting them to show their timing. The patterns are consistent across most measures, with a slight variation in the eighth measure. The score concludes with a double bar line and repeat dots.

© ROBERT FERRELL DRUM STUDIO 2017

ALL RIGHTS RESERVED

WWW.ROBERTFERRELL.COM



The image displays a musical score consisting of seven staves. The first staff includes two first/second endings, labeled '1' and '2', which are indicated by a bracket above the staff. The notation features a variety of rhythmic patterns, including eighth and sixteenth notes, often grouped with beams and stems. Many notes are marked with an 'x' above them, likely representing a specific articulation or fingerings. The score concludes with a double bar line on the seventh staff.