

# HOLD ON LOOSELY

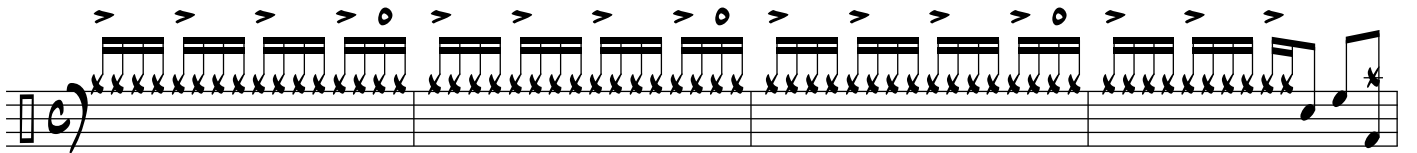
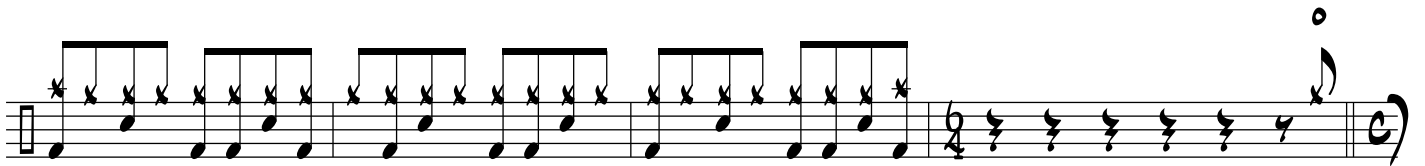
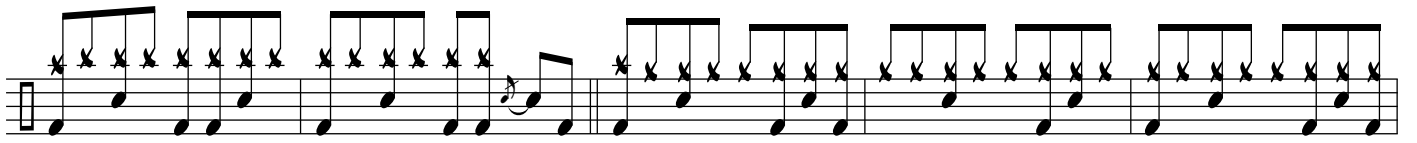
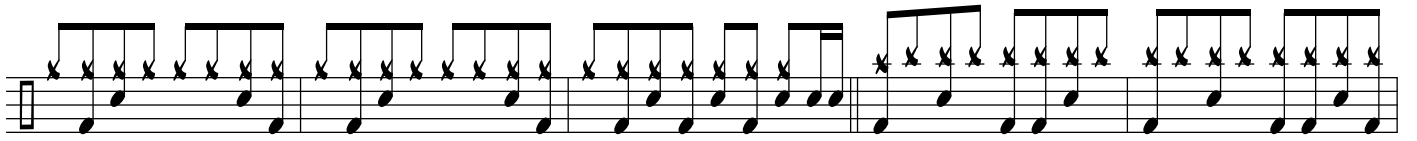
DRUM SET

The drum set notation is written on seven staves. The first staff begins with a common time signature (C) and a 3-measure rest. The notation uses 'x' marks to indicate drum hits, with various rhythmic patterns and accents. Above the notation, there are several symbols: a circled 'o' and a '+' sign, and a circled '5'. A double bar line is present in the fourth staff. A double slash is used at the end of the sixth staff. The notation includes various rhythmic patterns, including eighth and sixteenth notes, and rests.

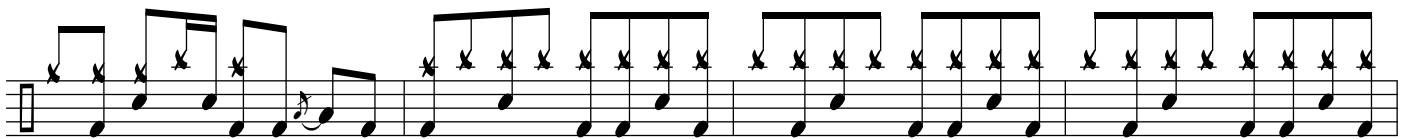
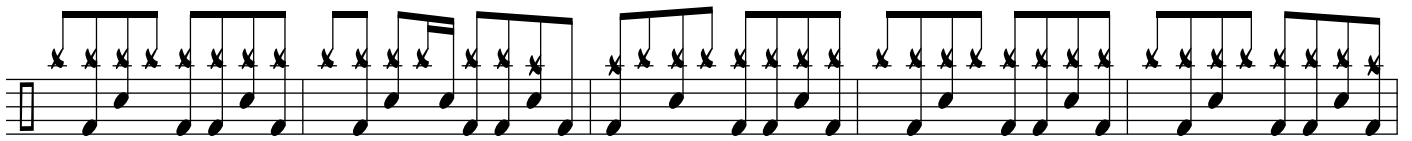
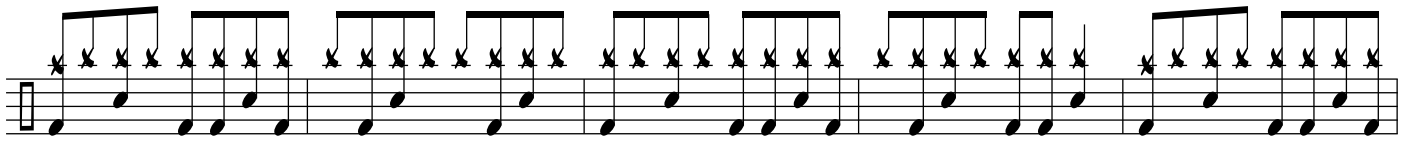
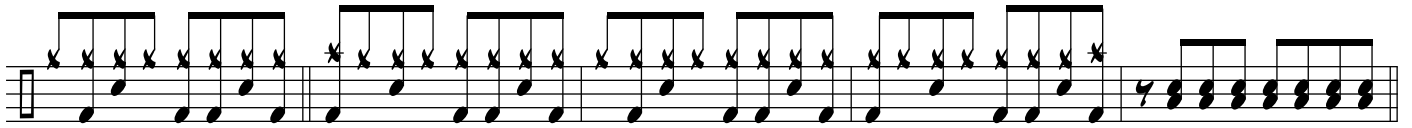
© ROB FERRELL DRUM STUDIO 2017

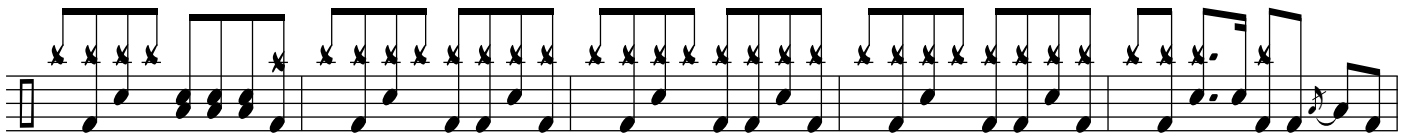
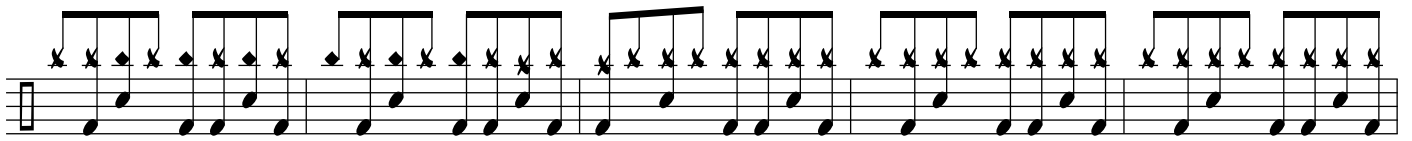
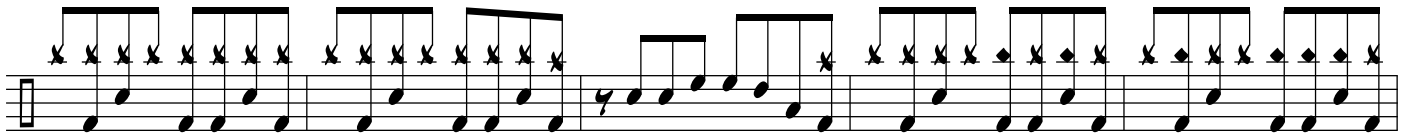
ALL RIGHTS RESERVED

WWW.ROBERTFERRELL.COM



o +





FADE

