

HEAVEN NOR HELL

DRUM SET

CLOSED HI HAT



HALF OPEN HI HAT



CLOSED HI HAT



HALF OPEN HI HAT



A musical staff in 7/8 time, starting with a treble clef and a key signature of one flat. The notation consists of eighth notes with stems, some marked with asterisks. The first measure contains a 7/8 time signature and a double bar line.

A musical staff in 7/8 time, continuing the rhythmic pattern from the previous staff. It features eighth notes with stems and asterisks.

A musical staff in 7/8 time, continuing the rhythmic pattern. It features eighth notes with stems and asterisks.

A musical staff in 7/8 time, continuing the rhythmic pattern. It features eighth notes with stems and asterisks.

CLOSED HI HAT

A musical staff in 7/8 time, continuing the rhythmic pattern. It features eighth notes with stems and asterisks.

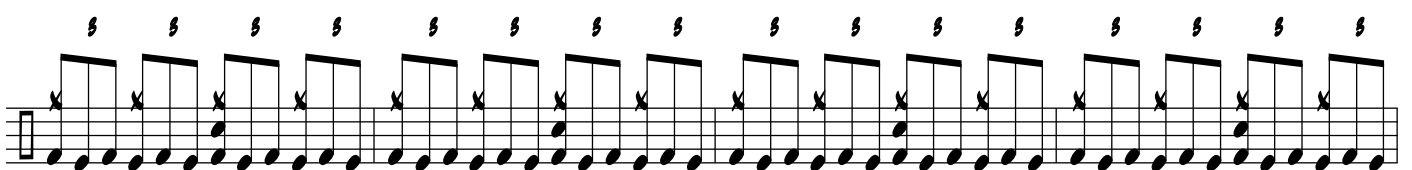
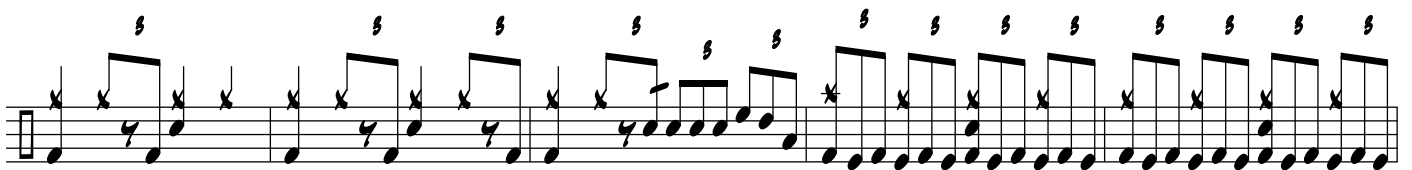
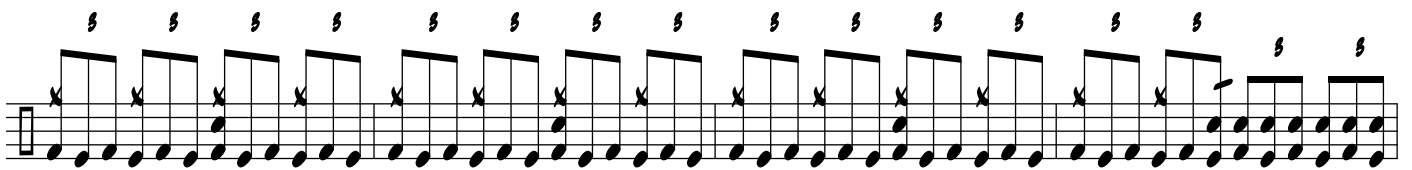
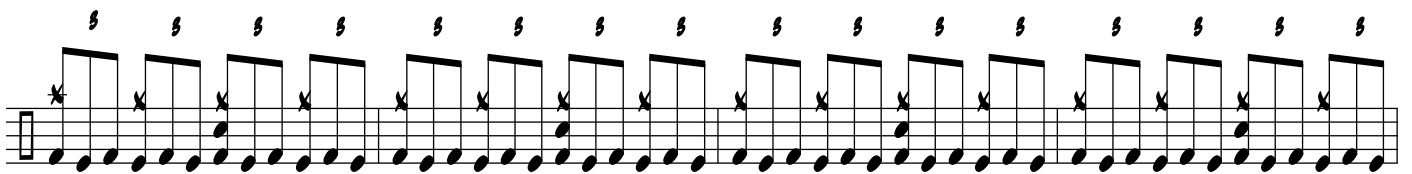
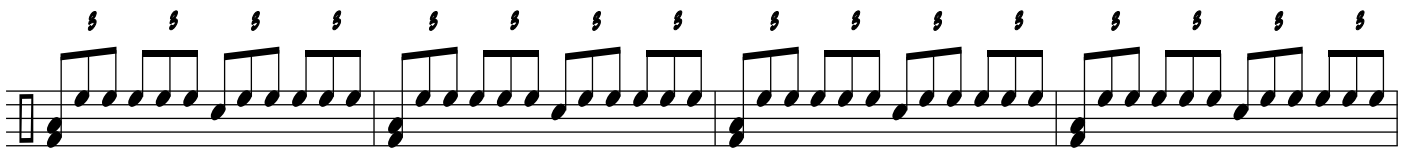
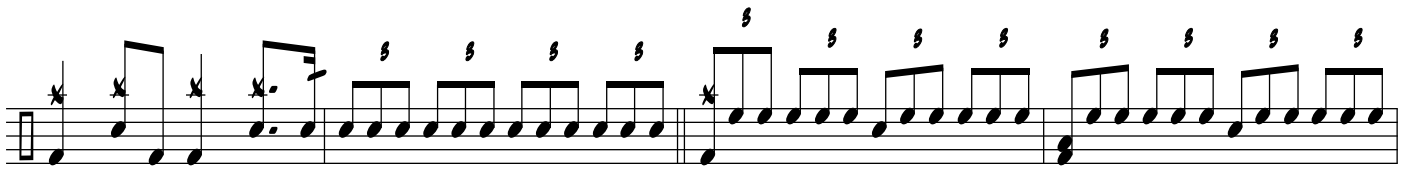
HALF OPEN HI HAT

A musical staff in 7/8 time, continuing the rhythmic pattern. It features eighth notes with stems and asterisks.

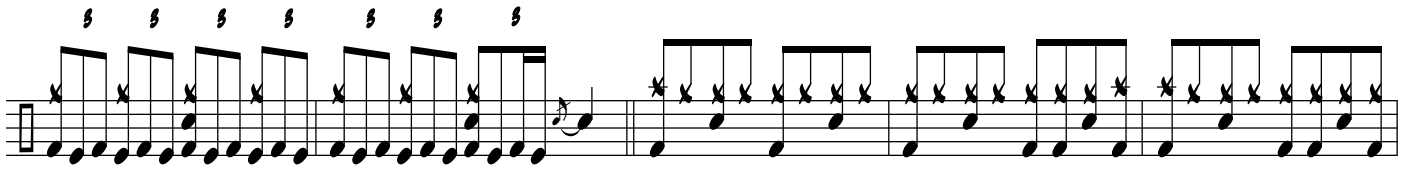
A musical staff in 7/8 time, continuing the rhythmic pattern. It features eighth notes with stems and asterisks.

A musical staff in 7/8 time, continuing the rhythmic pattern. It features eighth notes with stems and asterisks.

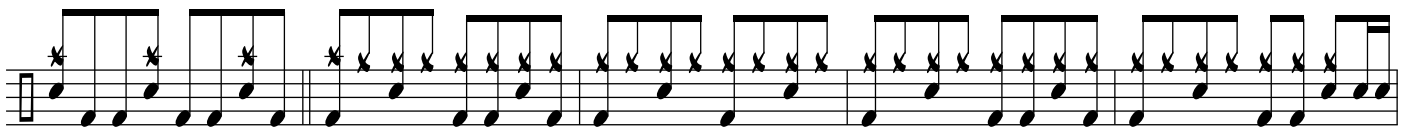
A musical staff in 7/8 time, continuing the rhythmic pattern. It features eighth notes with stems and asterisks.



5 5 5 5 5 5 5

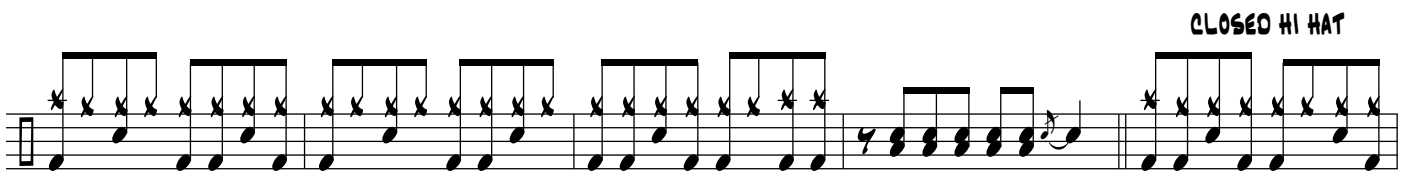


A musical staff showing a sequence of rhythmic patterns. The first seven measures feature a series of eighth notes with accents, each marked with a '5'. The eighth measure has a different rhythmic pattern, and the final two measures show a more complex rhythmic structure.



A musical staff with rhythmic notation. The first three measures have eighth notes with accents marked with asterisks. The remaining measures consist of eighth notes with rhythmic flags.

CLOSED HI HAT



A musical staff with rhythmic notation. The first six measures have eighth notes with accents marked with asterisks. The seventh measure has a different rhythmic pattern, and the final two measures show a more complex rhythmic structure.



A musical staff with rhythmic notation. The first two measures have eighth notes with accents marked with asterisks. The remaining measures consist of eighth notes with rhythmic flags.

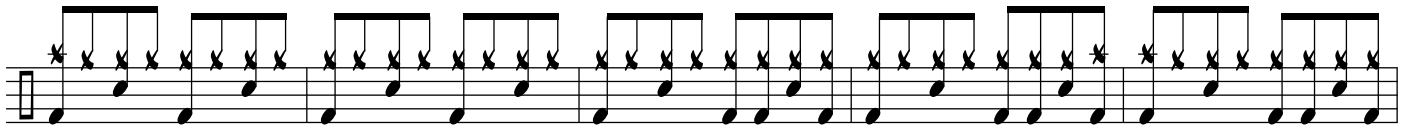
HALF OPEN HI HAT



A musical staff with rhythmic notation. The first two measures have eighth notes with accents marked with asterisks. The remaining measures consist of eighth notes with rhythmic flags.



A musical staff with rhythmic notation. The first six measures have eighth notes with accents marked with asterisks. The seventh measure has a different rhythmic pattern, and the final two measures show a more complex rhythmic structure.

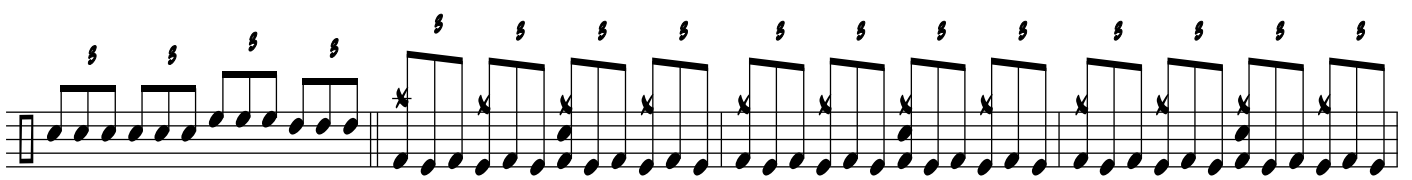


A musical staff with rhythmic notation. The first two measures have eighth notes with accents marked with asterisks. The remaining measures consist of eighth notes with rhythmic flags.



A musical staff with rhythmic notation. The first six measures have eighth notes with accents marked with asterisks. The seventh measure has a different rhythmic pattern, and the final two measures show a more complex rhythmic structure.

5 5 5 5 5 5 5 5 5 5 5 5 5 5 5 5



A musical staff with rhythmic notation. The first four measures have eighth notes with accents marked with '5'. The fifth measure has a different rhythmic pattern, and the remaining measures show a more complex rhythmic structure.

5 5 5 5 5 5 5 5 5 5 5 5 5 5 5 5

5 5 5 5 5 5 5 5 5 5 5 5 5 5 5 5

5 5 5 5 5 5 5 5 5 5 5 5 5 5 5 5

5 5 5 5