

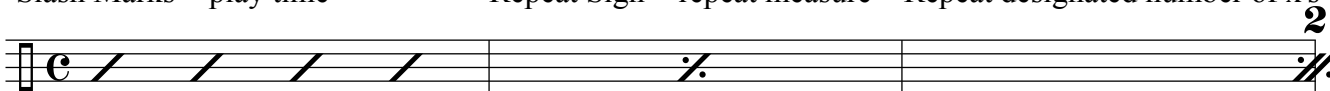
DRUM CHART LEGEND

Rob Ferrell

Slash Marks = play time

Repeat Sign = repeat measure

Repeat designated number of x's



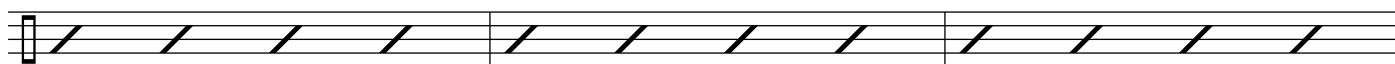
Repeat Brackets = repeat measure First, Second, etc Endings = play through, repeat, skip to next ending



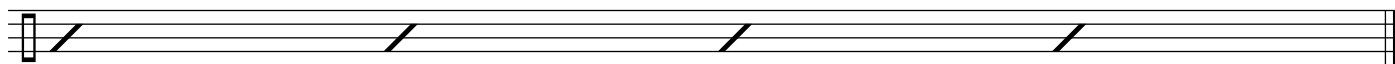
FILL

D.C.= return to top of chart

D.S.= return to sign



CODA = similar to a footnote and usually occur after D.C. or D.S.



Charts are similar to roadmaps and differ from transcriptions (note for note representations) in that they are a reference tool. Charts are used on sessions and gigs to provide a point of reference but still allow room for improvisation and interpretation within the parameters of the chart.