

# DREAMING

DRUM SET

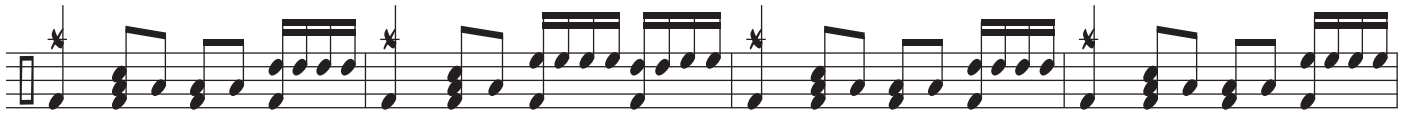
The drum set notation is written on seven staves. The first staff begins with a common time signature 'C' and a key signature of one flat. The notation uses various rhythmic symbols: quarter notes, eighth notes, and sixteenth notes, often grouped with beams. Accents are placed above certain notes. The notation is organized into measures, with some measures containing multiple rhythmic patterns. The overall structure consists of seven lines of music, each representing a different drum part.

© ROB FERRELL DRUM STUDIO 2020

ALL RIGHTS RESERVED

WWW.ROBERTFERRELL.COM





REPEAT AND FADE