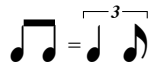


# BALL AND CHAIN



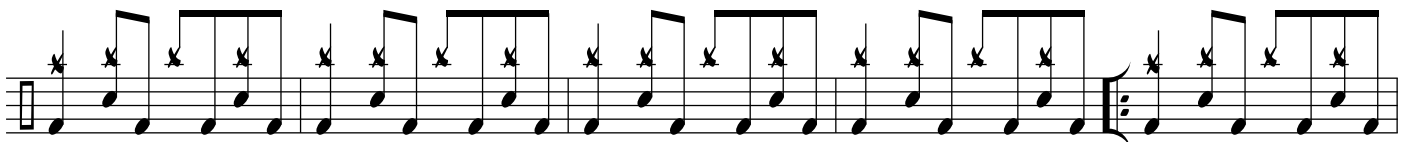
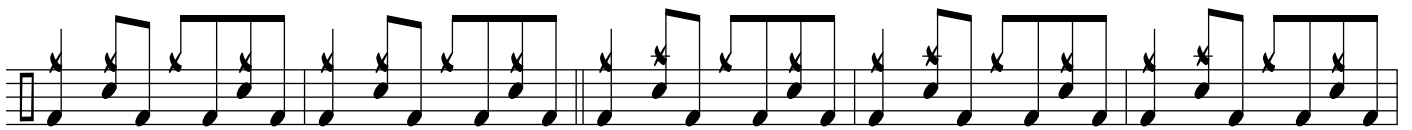
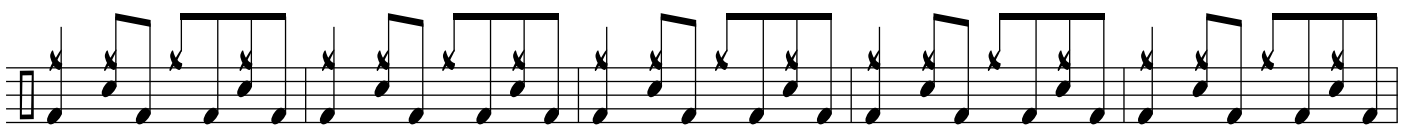
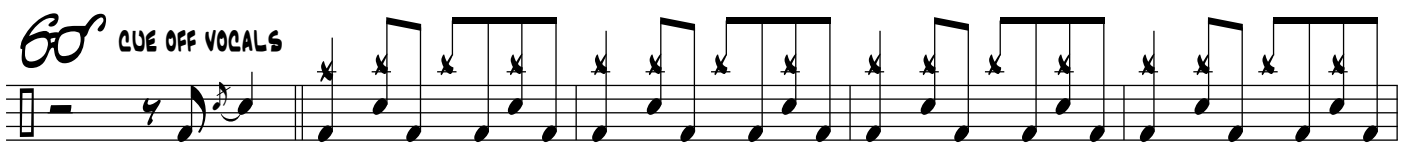
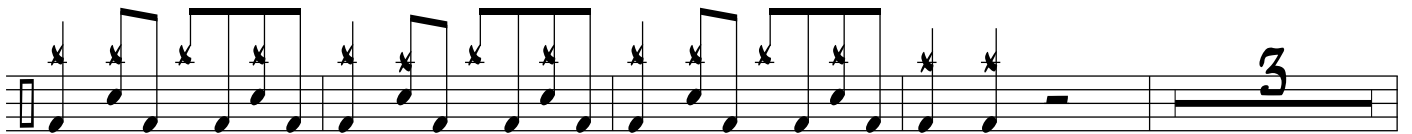
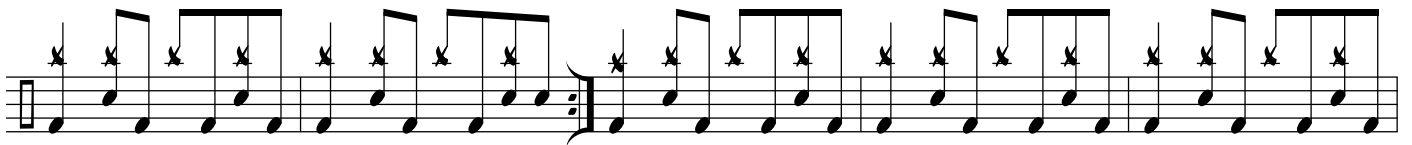
DRUM SET

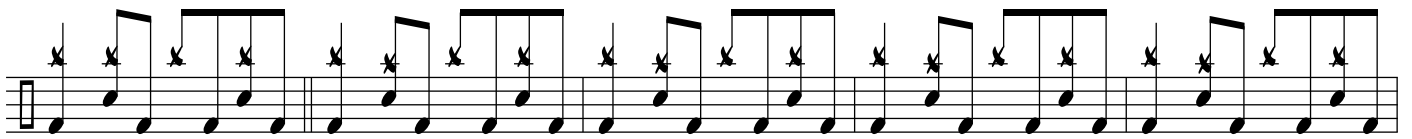
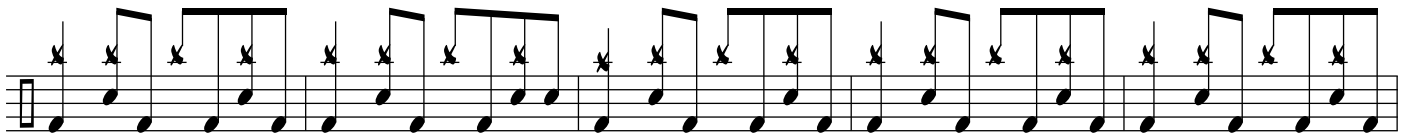
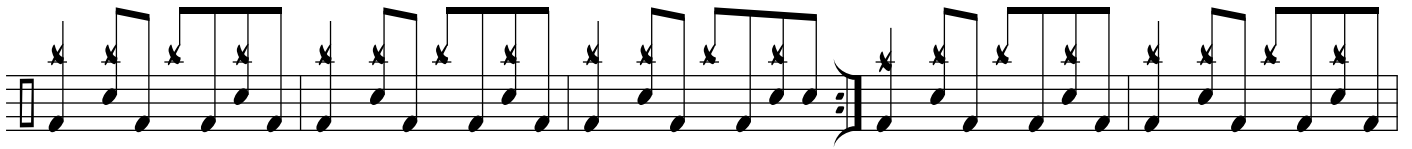
A series of eight staves of drum set notation. The first staff begins with a common time signature (C) and a large number 3 above the first measure, indicating a triplet. The notation consists of eighth notes with 'x' marks above them, representing a specific drum set pattern. The pattern is repeated across the subsequent staves, with some variations in the final measure of the eighth staff.

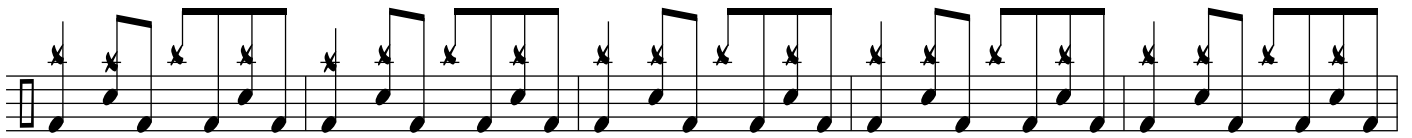
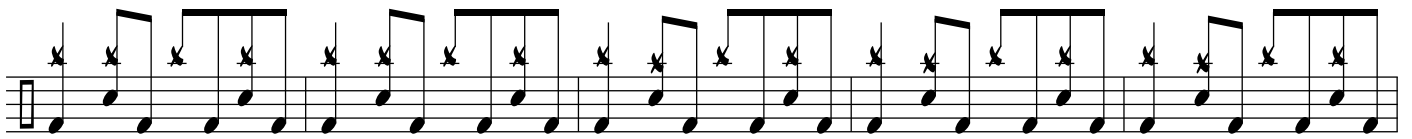
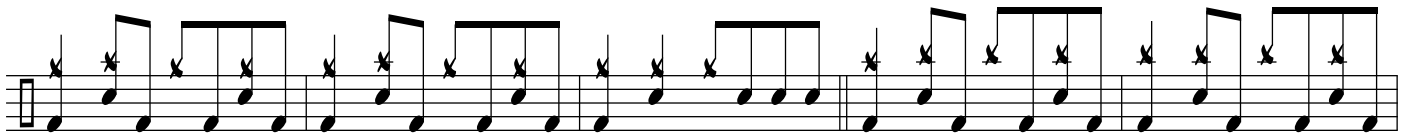
© ROB FERRELL DRUM STUDIO 2015

ALL RIGHTS RESERVED

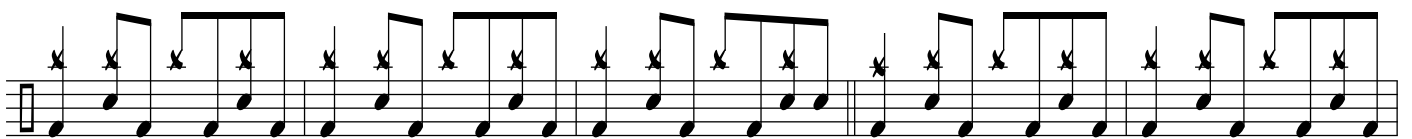
WWW.ROBERTFERRELL.COM







60 CUE OFF VOCALS



RUBATO