

THIS AIN'T NO LOVE SONG

DRUM SET

The first staff of music is labeled 'DRUM SET' and begins with a common time signature (C) and a key signature of one flat (Bb). The notation consists of a series of eighth and sixteenth notes, with 'x' marks above the notes indicating specific drum hits. The first few measures include a half note followed by eighth notes, then a series of eighth notes with 'x' marks.

The second staff of music starts at measure 5. It continues the rhythmic pattern with eighth and sixteenth notes and 'x' marks. There are circled 'o' marks above some notes, likely indicating a specific drum part like a cymbal. The staff ends with a double bar line.

The third staff of music starts at measure 9. It continues the rhythmic pattern with eighth and sixteenth notes and 'x' marks. There are circled 'o' marks above some notes. The staff ends with a double bar line.

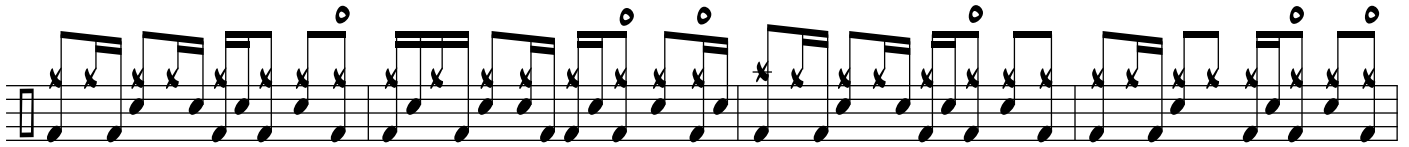
The fourth staff of music starts at measure 13. It continues the rhythmic pattern with eighth and sixteenth notes and 'x' marks. There are circled 'o' marks above some notes. The staff ends with a double bar line.

The fifth staff of music starts at measure 17. It continues the rhythmic pattern with eighth and sixteenth notes and 'x' marks. The staff ends with a double bar line.

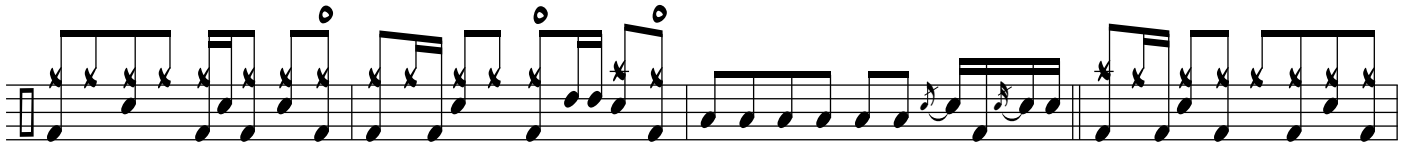
The sixth staff of music starts at measure 21. It continues the rhythmic pattern with eighth and sixteenth notes and 'x' marks. The staff ends with a double bar line.

The seventh staff of music starts at measure 25. It continues the rhythmic pattern with eighth and sixteenth notes and 'x' marks. There are circled 'o' marks above some notes. The staff ends with a double bar line.

25



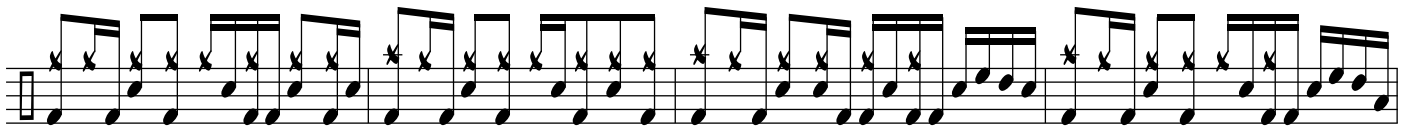
29



33



37



41



45



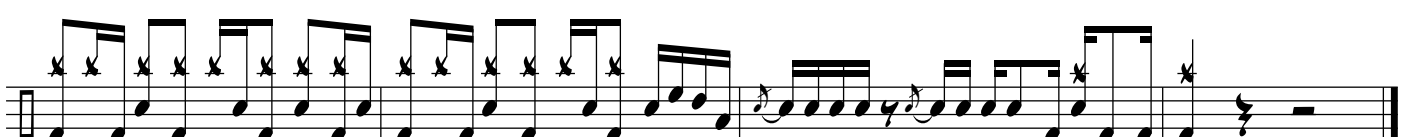
49



53



57



61