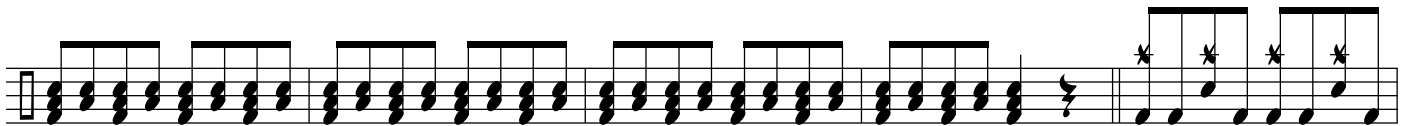
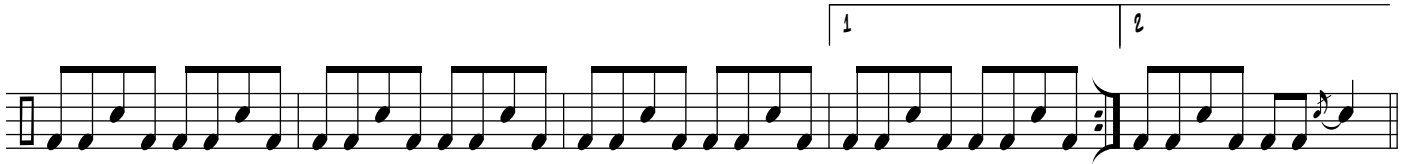
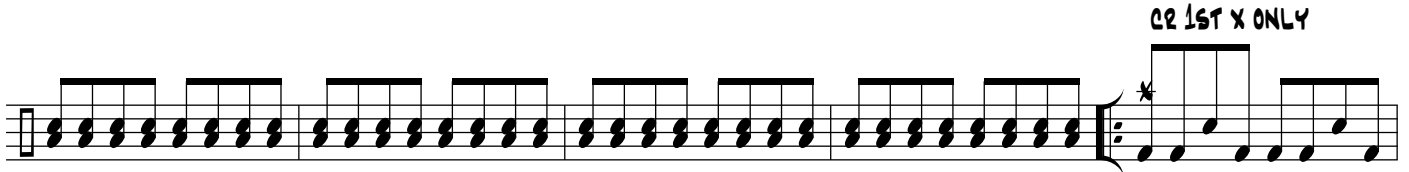
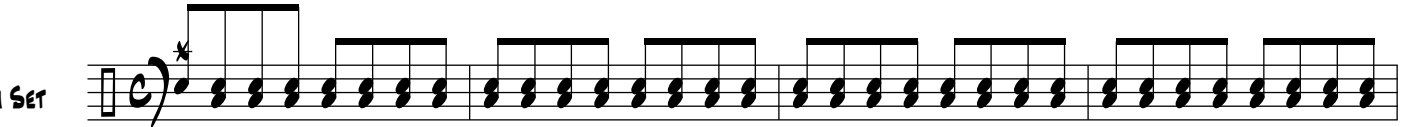


THE WOLF

DRUM SET



A musical staff with a treble clef and a key signature of one flat. It contains a sequence of rhythmic patterns. The first four measures feature a series of eighth notes with a beam above them, and each note has an asterisk above it. The remaining measures continue with similar rhythmic patterns.

A musical staff with a treble clef and a key signature of one flat. It contains a sequence of rhythmic patterns. The first four measures feature a series of eighth notes with a beam above them, and each note has an asterisk above it. The fifth measure is a repeat sign. The remaining measures continue with similar rhythmic patterns.

A musical staff with a treble clef and a key signature of one flat. It contains a sequence of rhythmic patterns consisting of eighth notes with a beam above them.

A musical staff with a treble clef and a key signature of one flat. It contains a sequence of rhythmic patterns. The first four measures are marked with a '1' above them, indicating a first ending. The fifth measure is a repeat sign. The sixth measure is marked with a '2' above it, indicating a second ending. The remaining measures continue with similar rhythmic patterns.

A musical staff with a treble clef and a key signature of one flat. It contains a sequence of rhythmic patterns. The first four measures feature a series of eighth notes with a beam above them, and each note has an asterisk above it. The remaining measures continue with similar rhythmic patterns.

A musical staff with a treble clef and a key signature of one flat. It contains a sequence of rhythmic patterns. The first four measures feature a series of eighth notes with a beam above them, and each note has an asterisk above it. The remaining measures continue with similar rhythmic patterns.

REPEAT 3X

A musical staff with a treble clef and a key signature of one flat. It contains a sequence of rhythmic patterns. The first four measures feature a series of eighth notes with a beam above them, and each note has an asterisk above it. The fifth measure is a repeat sign. The remaining measures continue with similar rhythmic patterns.

A musical staff with a treble clef and a key signature of one flat. It contains a sequence of rhythmic patterns. The first four measures feature a series of eighth notes with a beam above them, and each note has an asterisk above it. The remaining measures continue with similar rhythmic patterns.

A musical staff with a treble clef and a key signature of one flat. It contains a sequence of rhythmic patterns consisting of eighth notes with a beam above them.

Musical staff with rhythmic patterns. The first part consists of a steady eighth-note accompaniment. The second part features a series of eighth-note chords, each with an accent (>) above it. The word "CRES." is written below the staff.

Musical staff with rhythmic patterns. The first part continues with eighth-note chords, each with an accent (>) above it. The second part features a series of eighth-note chords, each with an asterisk (*) above it.

Musical staff with rhythmic patterns. The first part features a series of eighth-note chords, each with an asterisk (*) above it. The second part continues with eighth-note chords, each with an asterisk (*) above it.

Musical staff with rhythmic patterns. The first part features a series of eighth-note chords, each with an asterisk (*) above it. The second part continues with eighth-note chords, each with an asterisk (*) above it.

Musical staff with rhythmic patterns. The first part features a series of eighth-note chords, each with an asterisk (*) above it. The second part continues with eighth-note chords, each with an asterisk (*) above it.