

THE ARTIST IN THE AMBULANCE

DRUM SET

Musical notation for the first staff of the drum set part. It begins with a common time signature (C) and two measures of rests, each marked with a 'B'. The notation then continues with a series of eighth notes and sixteenth notes, some marked with an asterisk (*).

Musical notation for the second staff of the drum set part, continuing the rhythmic pattern of eighth and sixteenth notes with asterisks.

20

Musical notation for the third staff of the drum set part, continuing the rhythmic pattern.

25

Musical notation for the fourth staff of the drum set part, continuing the rhythmic pattern.

30

Musical notation for the fifth staff of the drum set part, continuing the rhythmic pattern.

35

Musical notation for the sixth staff of the drum set part, featuring a change in rhythm with eighth notes and sixteenth notes, some marked with an asterisk.

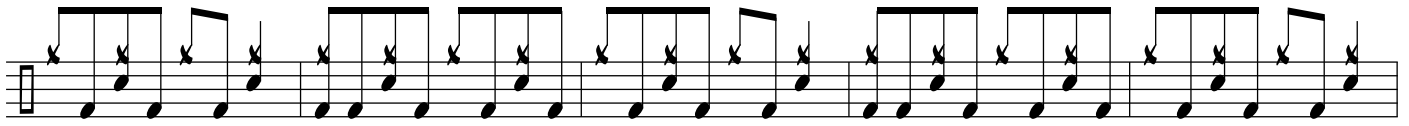
40

Musical notation for the seventh staff of the drum set part, continuing the rhythmic pattern.

45



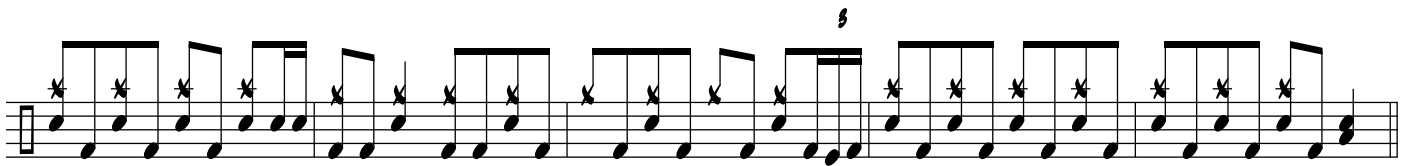
50



55



60



65



70



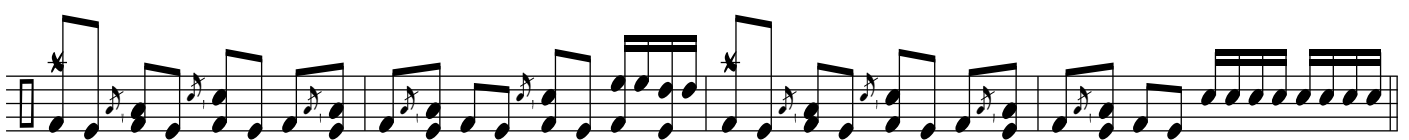
75



80

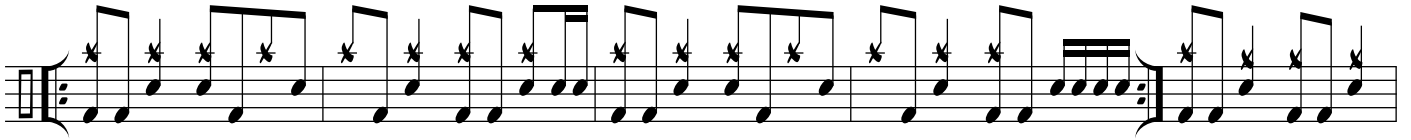


85



90

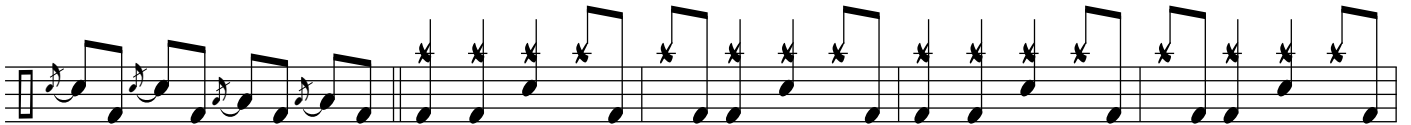
REPEAT 3X!



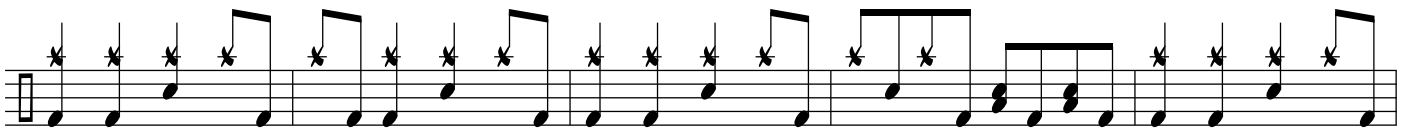
94



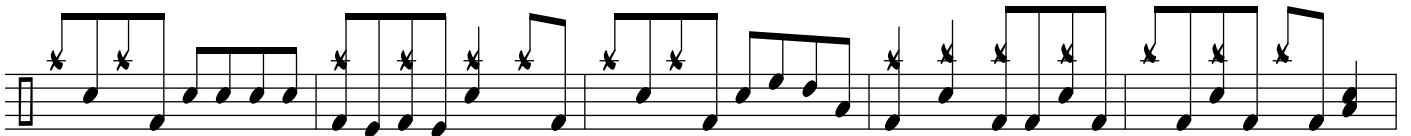
99



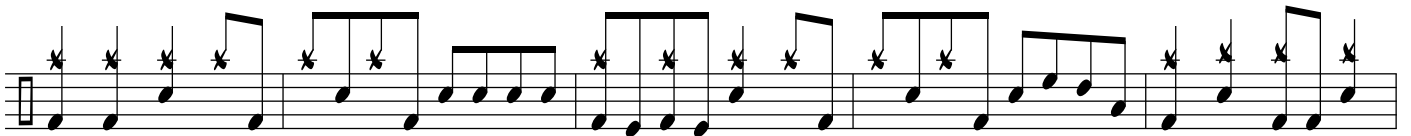
109



114



119



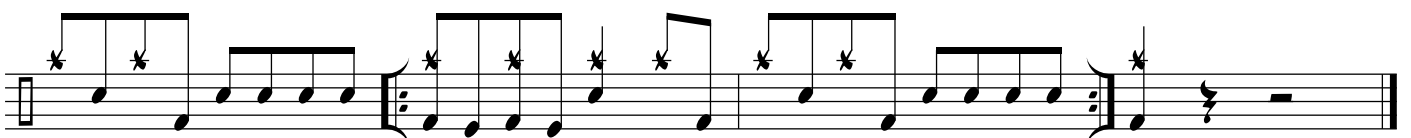
124



129



134



139