

TAKE YOU BACK

DRUM SET

CLOSED HI HAT
○ +

2

6

10

14

18

CLOSED HI HAT
○ +

22

26

HALF OPEN HI HAT

The image shows a drum set score for the song 'Take You Back'. It consists of seven staves of music. The first staff starts with a 'C' time signature and a '2' indicating a two-measure rest. Above the first staff, the text 'CLOSED HI HAT' is written with a circled 'o' and a '+' sign. Above the second staff, there are two circled 'o' and '+' signs. Above the third staff, there are two circled 'o' and '+' signs. Above the fourth staff, there are two circled 'o' and '+' signs. Above the fifth staff, the text 'HALF OPEN HI HAT' is written. Above the sixth staff, the text 'CLOSED HI HAT' is written with a circled 'o' and a '+' sign. Above the seventh staff, there are two circled 'o' and '+' signs. The notation includes various drum symbols: 'x' for snare, 'o' for hi-hat, and 'o' for bass drum. The music is written in a 4/4 time signature with a common time signature 'C' at the beginning.

30

o + o +

34

o + o +

38

o + HALF OPEN HI HAT

42

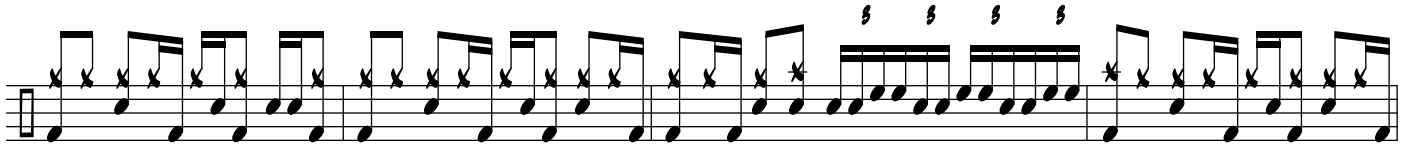
46

50

54

58

62



67



71