

SLAMMIN'

DRUM SET

Musical notation for the first staff of the drum set part, starting with a common time signature (C) and a series of eighth and sixteenth notes with 'x' marks indicating specific drum sounds.

HALF OPEN HI HAT!

Musical notation for the second staff of the drum set part, featuring a consistent eighth-note pattern with 'x' marks and a 'HALF OPEN HI HAT!' instruction.

6

CLOSED HI HAT!

o +

o +

o +

HALF OPEN HI HAT!

Musical notation for the third staff of the drum set part, alternating between 'CLOSED HI HAT!' and 'HALF OPEN HI HAT!' instructions with corresponding note patterns.

11

CLOSED HI HAT!

o +

o +

o +

HALF OPEN HI HAT!

Musical notation for the fourth staff of the drum set part, continuing the alternating pattern of 'CLOSED HI HAT!' and 'HALF OPEN HI HAT!'.

16

Musical notation for the fifth staff of the drum set part, featuring a consistent eighth-note pattern with 'x' marks.

21

Musical notation for the sixth staff of the drum set part, featuring a consistent eighth-note pattern with 'x' marks and a '5' above the final measure.

26

CLOSED HI HAT!

o +

o +

o +

HALF OPEN HI HAT!

Musical notation for the seventh staff of the drum set part, alternating between 'CLOSED HI HAT!' and 'HALF OPEN HI HAT!' instructions.

31

CLOSED HI HAT!

o +

o +

o +

HALF OPEN HI HAT!

36

41

46

51

56

61

66

HALF OPEN HI HAT!

71

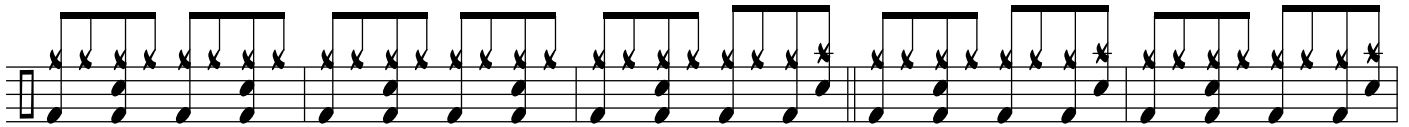
76



81



86



91



96