

PLEASE DON'T LEAVE ME (LIVE)

DRUM SET

The first staff of the drum set part begins with a 4/4 time signature. The first measure contains a single 'x' on the top line. The second measure is marked with a common time signature 'C' and contains four 'x's on the top line. The third and fourth measures each contain eight 'x's on the top line. The fifth measure contains a quarter note on the bottom line, followed by a quarter rest, a quarter note on the bottom line, and a quarter note on the bottom line.

The second staff of the drum set part begins with a 4/4 time signature. It contains four measures, each with eight 'x's on the top line. The fifth measure contains a quarter note on the bottom line, followed by a quarter rest, a quarter note on the bottom line, and a quarter note on the bottom line.

6

The third staff of the drum set part begins with a 4/4 time signature. It contains five measures, each with eight 'x's on the top line. The sixth measure contains a quarter note on the bottom line, followed by a quarter rest, a quarter note on the bottom line, and a quarter note on the bottom line.

11

The fourth staff of the drum set part begins with a 4/4 time signature. It contains five measures, each with eight 'x's on the top line. The sixth measure contains a quarter note on the bottom line, followed by a quarter rest, a quarter note on the bottom line, and a quarter note on the bottom line. The seventh measure contains a quarter note on the bottom line, followed by a quarter rest, a quarter note on the bottom line, and a quarter note on the bottom line. The eighth measure contains a quarter note on the bottom line, followed by a quarter rest, a quarter note on the bottom line, and a quarter note on the bottom line. The ninth measure contains a quarter note on the bottom line, followed by a quarter rest, a quarter note on the bottom line, and a quarter note on the bottom line. The tenth measure contains a quarter note on the bottom line, followed by a quarter rest, a quarter note on the bottom line, and a quarter note on the bottom line.

16

The fifth staff of the drum set part begins with a 4/4 time signature. It contains five measures, each with eight 'x's on the top line. The sixth measure contains a quarter note on the bottom line, followed by a quarter rest, a quarter note on the bottom line, and a quarter note on the bottom line.

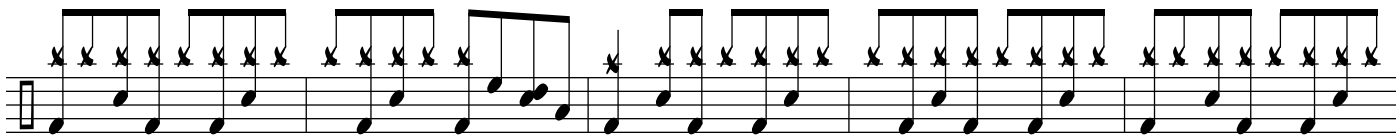
21

The sixth staff of the drum set part begins with a 4/4 time signature. It contains five measures, each with eight 'x's on the top line. The sixth measure contains a quarter note on the bottom line, followed by a quarter rest, a quarter note on the bottom line, and a quarter note on the bottom line. The seventh measure contains a quarter note on the bottom line, followed by a quarter rest, a quarter note on the bottom line, and a quarter note on the bottom line. The eighth measure contains a quarter note on the bottom line, followed by a quarter rest, a quarter note on the bottom line, and a quarter note on the bottom line. The ninth measure contains a quarter note on the bottom line, followed by a quarter rest, a quarter note on the bottom line, and a quarter note on the bottom line. The tenth measure contains a quarter note on the bottom line, followed by a quarter rest, a quarter note on the bottom line, and a quarter note on the bottom line.

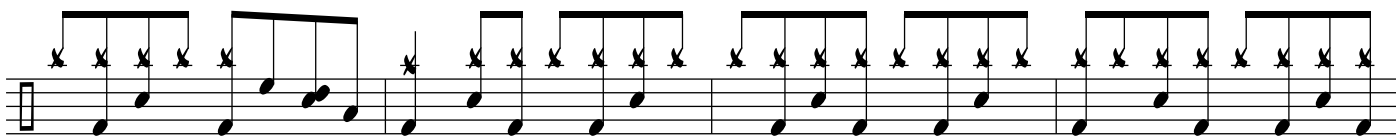
26

The seventh staff of the drum set part begins with a 4/4 time signature. It contains five measures, each with eight 'x's on the top line. The sixth measure contains a quarter note on the bottom line, followed by a quarter rest, a quarter note on the bottom line, and a quarter note on the bottom line. The seventh measure contains a quarter note on the bottom line, followed by a quarter rest, a quarter note on the bottom line, and a quarter note on the bottom line. The eighth measure contains a quarter note on the bottom line, followed by a quarter rest, a quarter note on the bottom line, and a quarter note on the bottom line. The ninth measure contains a quarter note on the bottom line, followed by a quarter rest, a quarter note on the bottom line, and a quarter note on the bottom line. The tenth measure contains a quarter note on the bottom line, followed by a quarter rest, a quarter note on the bottom line, and a quarter note on the bottom line.

31



36



41



45



49



54



59



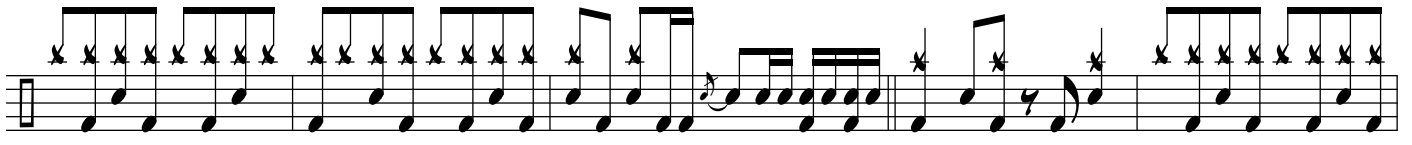
64



69



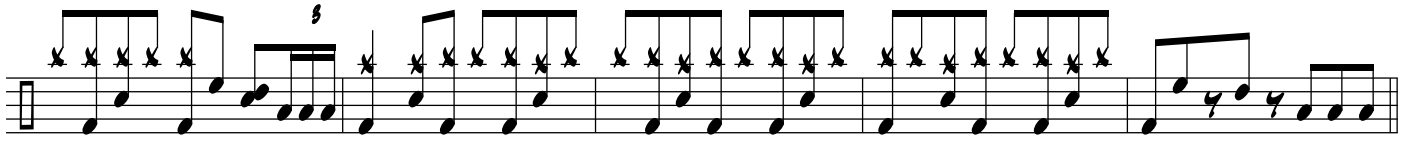
74



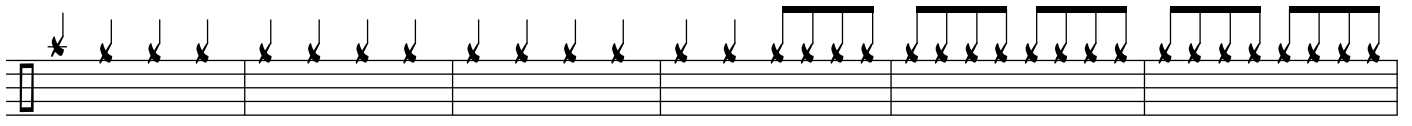
79



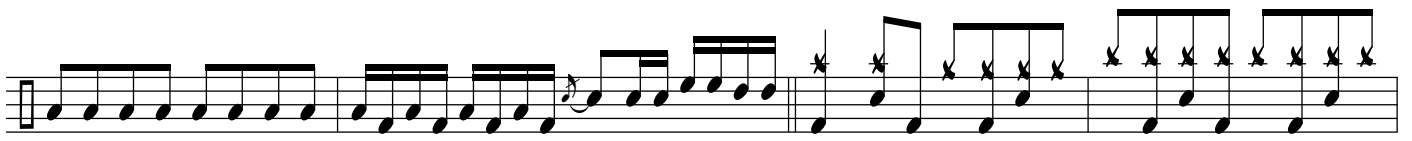
84



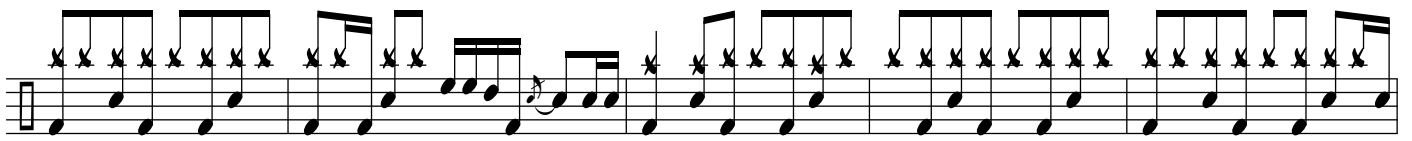
89



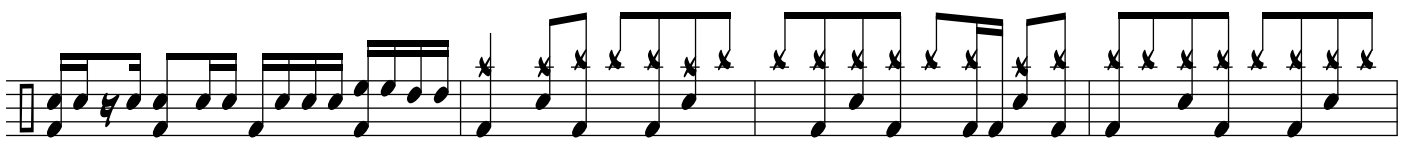
94



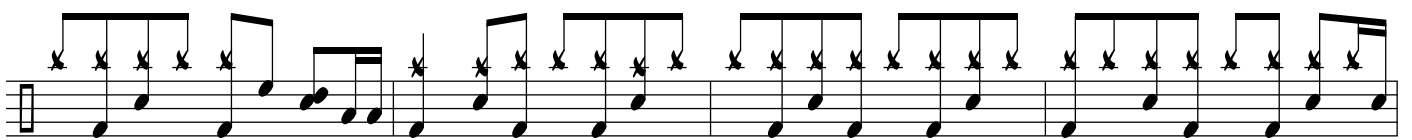
100



104



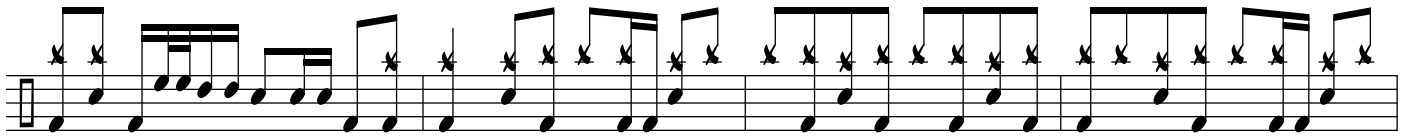
109



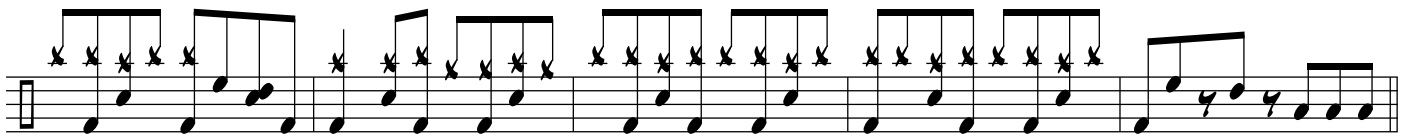
113



117



121



125



130