

# PARADISE CITY

DRUM SET

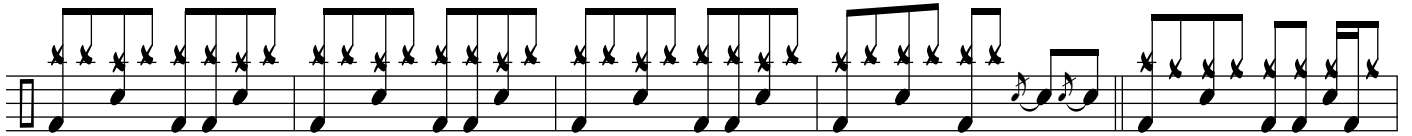
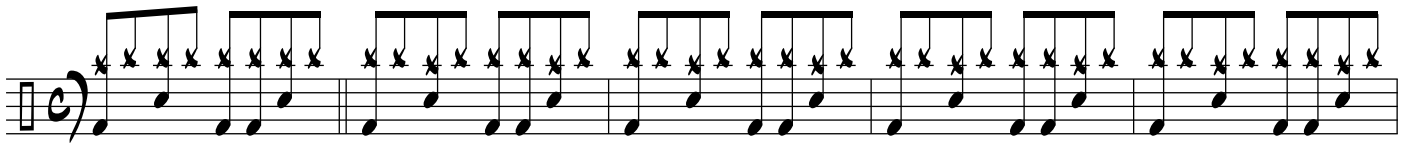
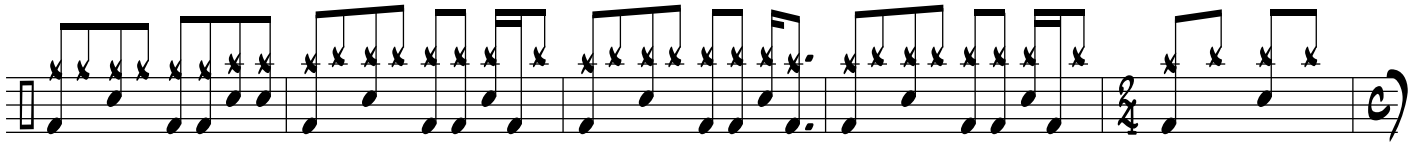
The image displays a drum set score for the song "Paradise City". It consists of seven staves of music. The first staff begins with a common time signature (C) and a key signature of one sharp (F#). The notation includes various rhythmic patterns: the first four measures feature a consistent pattern of eighth notes with 'x' marks above them, indicating cymbal hits; the fifth measure introduces a different rhythmic pattern with quarter notes and eighth notes. The second staff continues with a similar eighth-note pattern. The third staff shows a more complex pattern with quarter notes and eighth notes. The fourth staff features a pattern with quarter notes and eighth notes, including some measures with 'x' marks. The fifth staff continues with quarter notes and eighth notes, some with 'x' marks. The sixth staff has a pattern of quarter notes and eighth notes, with 'x' marks above some notes. The seventh staff concludes with a pattern of quarter notes and eighth notes, ending with a double bar line and a common time signature (C).

© ROB FERRELL DRUM STUDIO 2017

ALL RIGHTS RESERVED

WWW.ROBERTFERRELL.COM

This image displays a page of musical notation for guitar, consisting of ten staves. The notation is written in a single system across these staves. The music features a variety of rhythmic patterns, including eighth and sixteenth notes, often grouped with slurs. Asterisks (\*) are placed above certain notes, likely indicating accents or specific techniques. The notation includes dynamic markings such as  $mf$  and  $ff$ . The piece begins with a treble clef and a common time signature (C). There are several double bar lines with repeat signs (||) throughout the score. The notation is dense and detailed, typical of a guitar score for a complex piece.



REPEAT 3X

