

LET THIS GO

(ROB FERRELL)

INTRO

DRUM SET

3x

2x

VERSE

3

6

13

18

CHORUS

2x

23

28

33

VERSE

Musical staff for Verse, measures 38-43. The staff contains a sequence of eighth and sixteenth notes with 'x' marks above them, indicating fretted notes. The melody is consistent across these measures.

38

Musical staff for Verse, measures 44-48. Continuation of the verse melody with eighth and sixteenth notes and 'x' marks.

43

Musical staff for Verse, measures 49-53. Continuation of the verse melody, ending with a double bar line and a repeat sign.

49

CHORUS

Musical staff for Chorus, measures 54-58. Features a sequence of eighth notes with 'x' marks, followed by a double bar line with '2x' and a repeat sign, and then a melodic phrase.

54

Musical staff for Chorus, measures 59-63. Continuation of the chorus melody with eighth notes and 'x' marks, including a '2x' repeat sign.

59

Musical staff for Chorus, measures 64-68. Continuation of the chorus melody, ending with a double bar line and a repeat sign. The word 'BRIDGE' is written above the staff.

64

Musical staff for Chorus, measures 69-73. Continuation of the chorus melody, featuring a '2x' repeat sign and a melodic phrase.

69

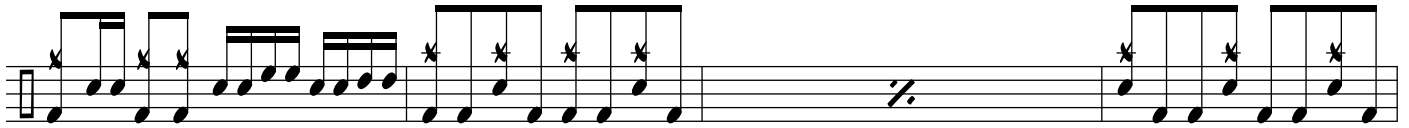
SOLO

Musical staff for Solo, measures 74-77. Features a sequence of eighth notes with 'x' marks, followed by a double bar line with '2x' and a repeat sign, and then a melodic phrase.

73

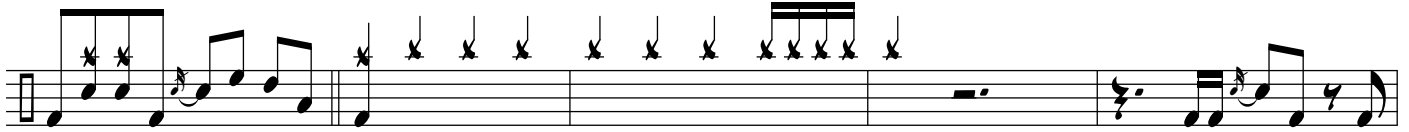
Musical staff for Solo, measures 78-82. Continuation of the solo melody with eighth notes and 'x' marks, including a '2x' repeat sign.

78

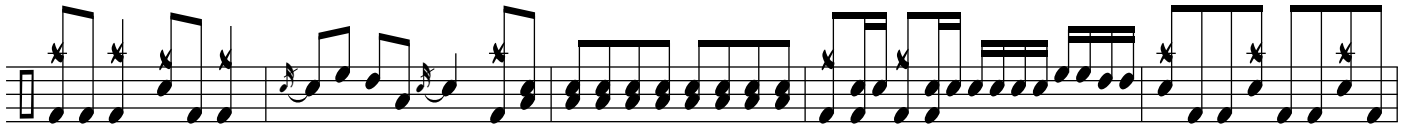


82

CHORUS / OUTRO



86



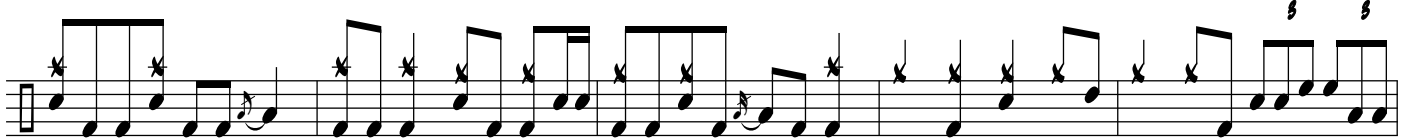
91



96



101



105



110