

IN THE GARAGE

DRUM SET

Drum set notation for the first staff, starting with a common time signature (C) and a 4-measure rest.

HALF OPEN HI HAT

Drum set notation for the second staff, featuring half open hi hat patterns. The notation includes two open circles above the first two measures, indicating the hi hat is open. The pattern consists of eighth notes on the snare and bass drums, with 'x' marks above the snare notes indicating hi hat hits.

CLOSED HI HAT

Drum set notation for the third staff, featuring closed hi hat patterns. The notation includes 'x' marks above the snare notes, indicating the hi hat is closed.

HALF OPEN HI HAT

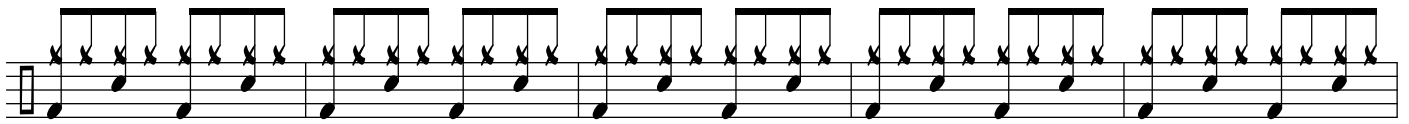
Drum set notation for the fourth staff, featuring half open hi hat patterns. Similar to the second staff, it includes two open circles above the first two measures.

Drum set notation for the fifth staff, featuring a mix of closed and half open hi hat patterns. It includes 'x' marks above the snare notes and open circles above the first two measures.

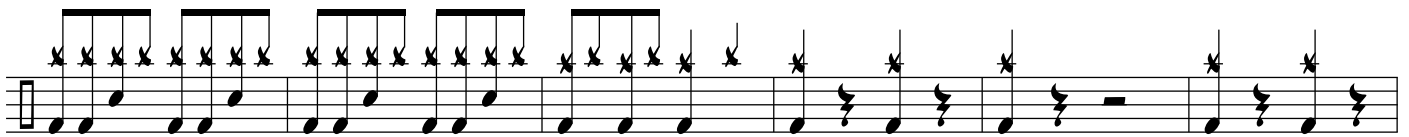
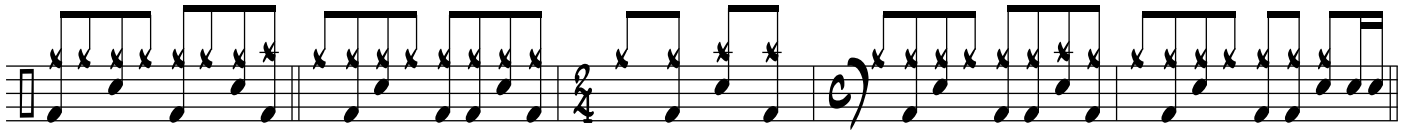
Drum set notation for the sixth staff, featuring closed hi hat patterns. It includes 'x' marks above the snare notes.

CLOSED HI HAT

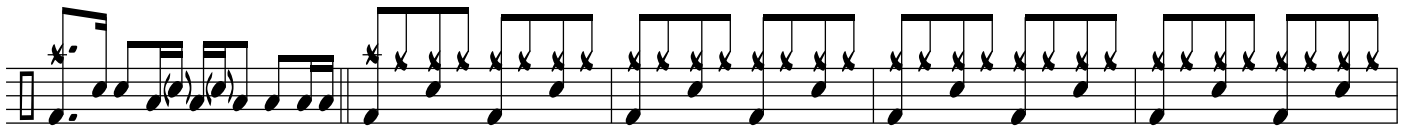
Drum set notation for the seventh staff, featuring closed hi hat patterns. It includes 'x' marks above the snare notes.



HALF OPEN HI HAT



CLOSED HI HAT



HALF OPEN HI HAT

