

I'LL BE YOUR SISTER

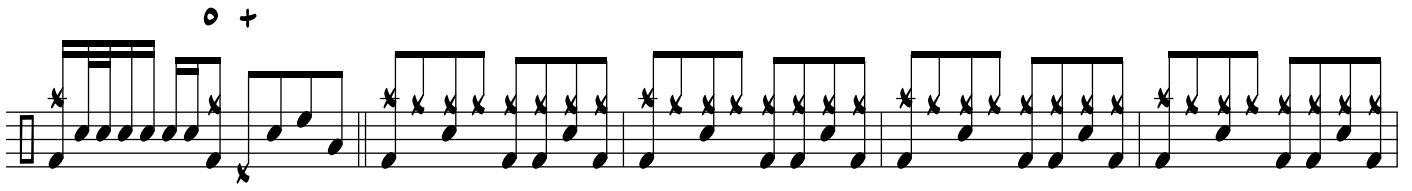
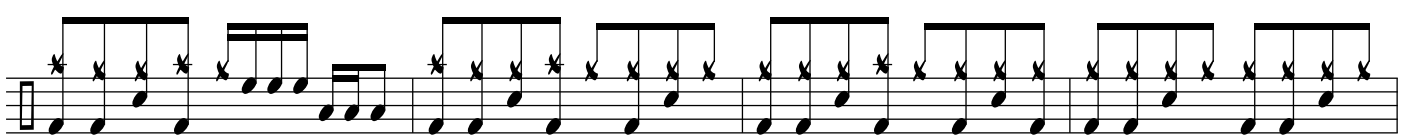
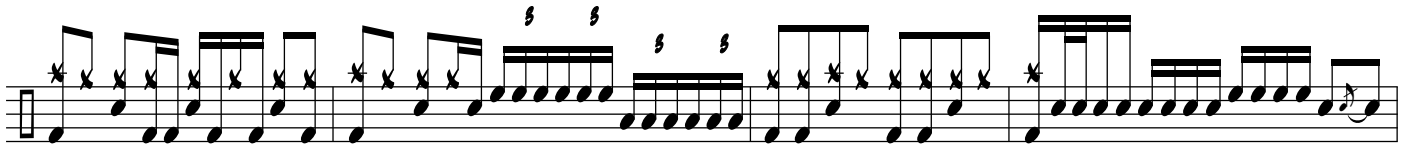
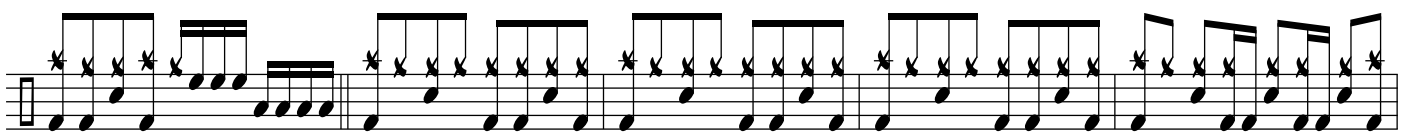
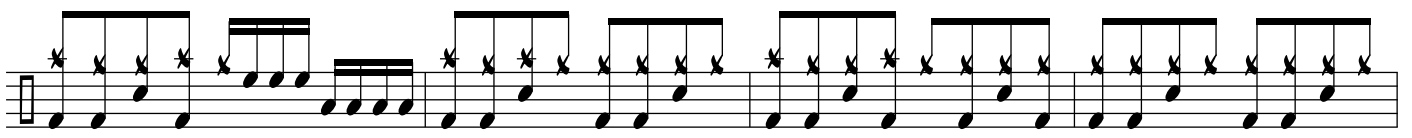
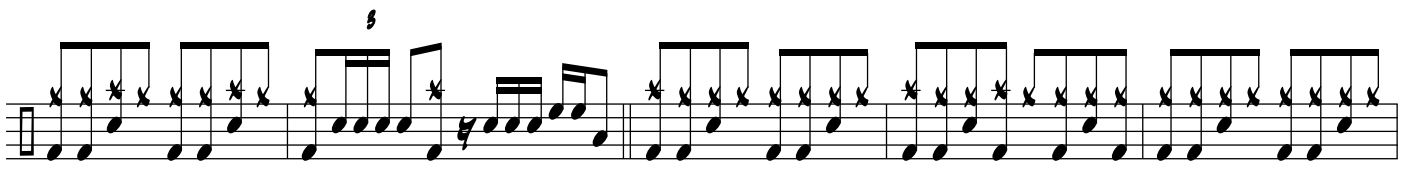
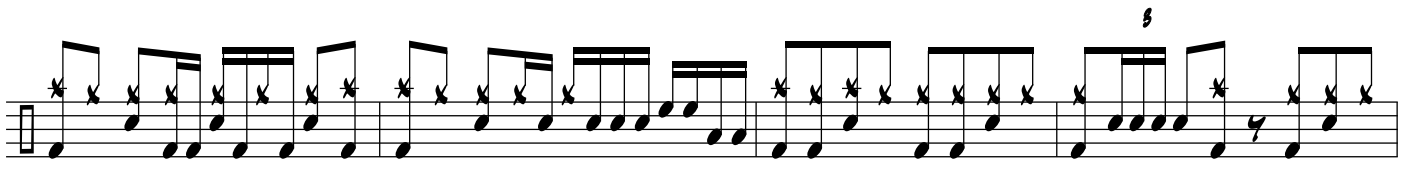
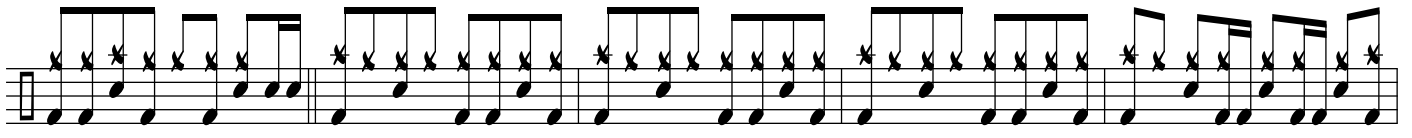
DRUM SET

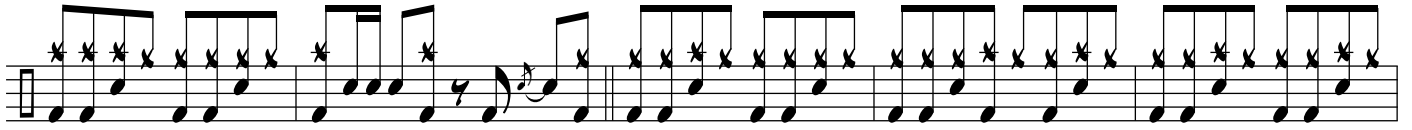
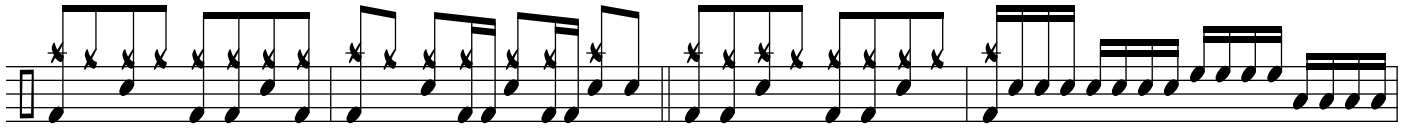
The drum set notation is written on a single staff with a common time signature (C). The notation uses various rhythmic symbols: vertical lines for snare, horizontal lines for hi-hat, and 'x' marks for cymbals. The piece begins with a 4-measure rest, followed by a series of rhythmic patterns. The notation includes various note values such as quarter, eighth, and sixteenth notes, as well as rests. There are also some special markings like 's' and 'o' above the staff. The piece concludes with a final 4-measure rest.

© ROBERT FERRELL DRUM STUDIO 2015

ALL RIGHTS RESERVED

WWW.ROBERTFERRELL.COM





FADE

