

DREAMLINE

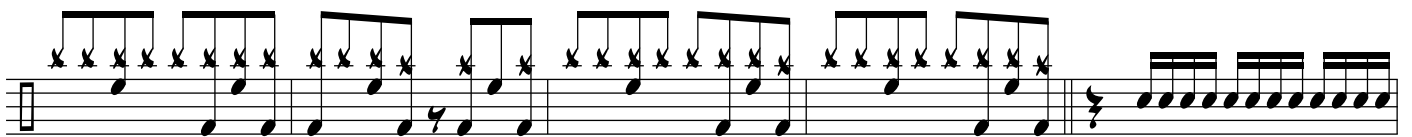
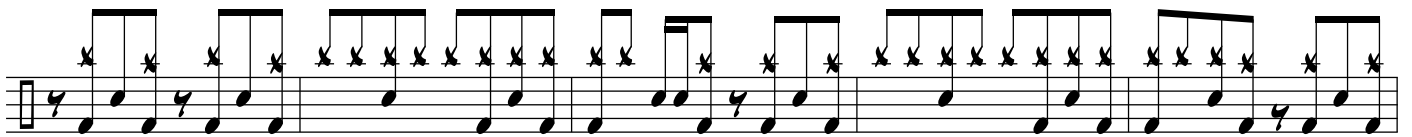
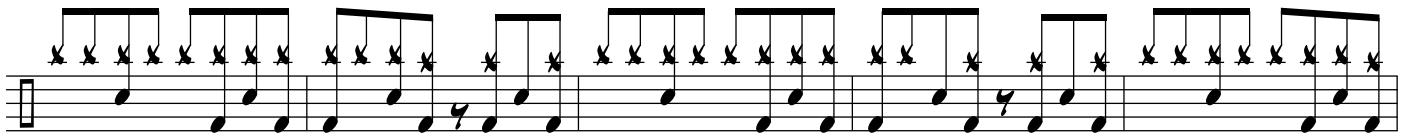
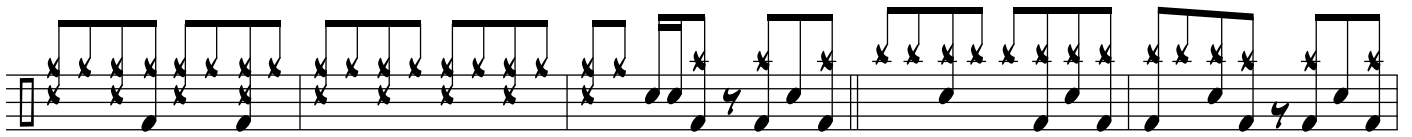
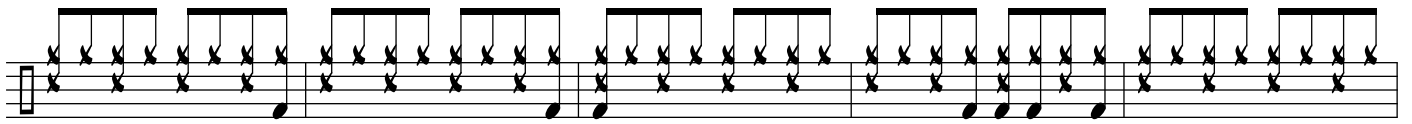
DRUM SET

The drum set notation for 'Dreamline' is written in common time (C) and consists of eight staves. The notation uses 'x' marks to indicate cymbal hits and various note values (quarter, eighth, and sixteenth notes) to represent other drum parts. The pattern is highly rhythmic and complex, involving many beamed notes and rests. The first staff begins with a common time signature 'C' and a key signature signature '1'.

© ROS FERRELL DRUM STUDIO 2016

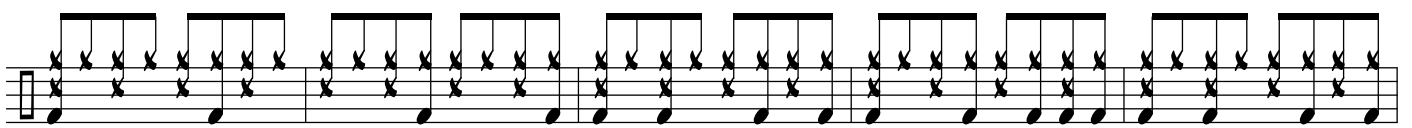
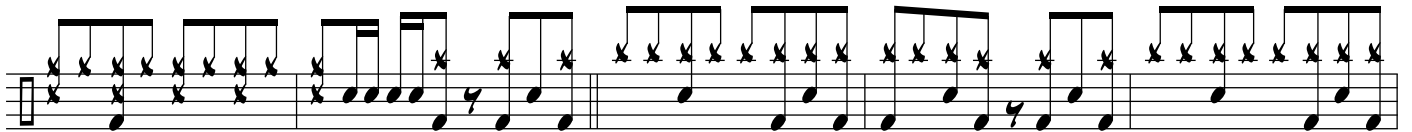
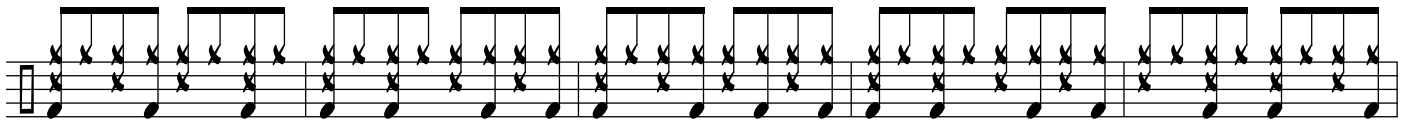
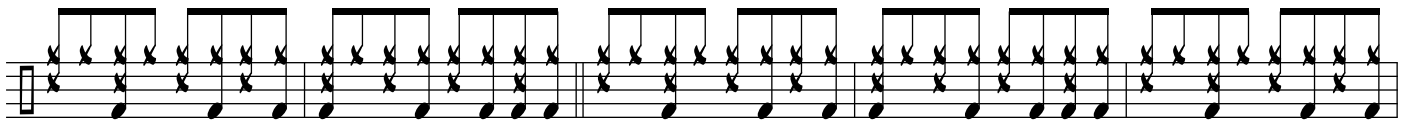
ALL RIGHTS RESERVED

WWW.ROBERTFERRELL.COM

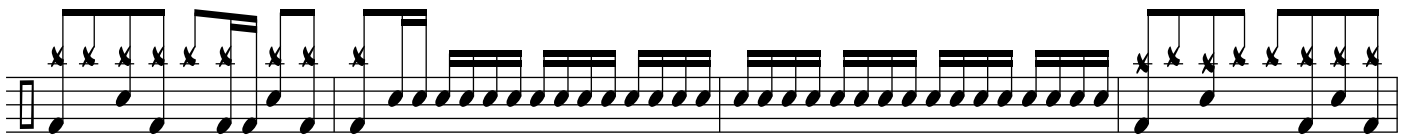
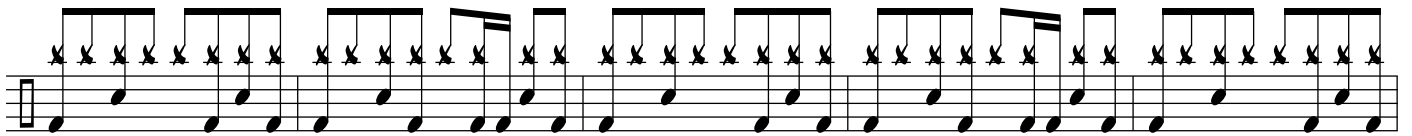
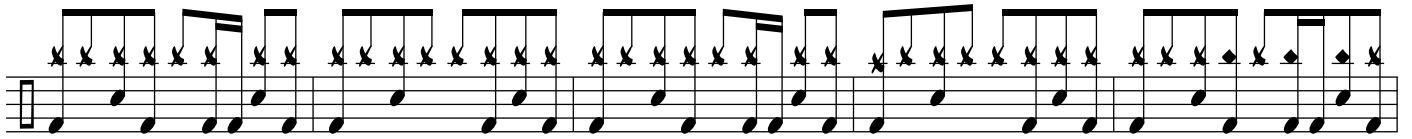
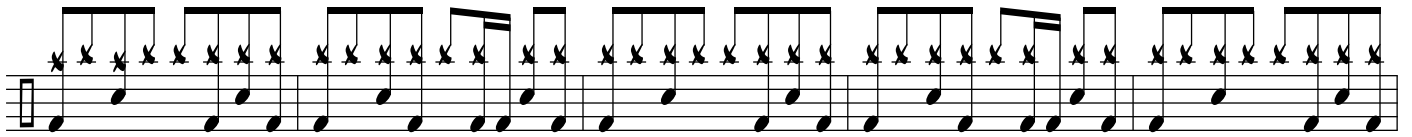


cresc!





CRESC!



cresc!

