

# Check Yes Juliet

Drum Set

The drum set notation is written on a single staff with a common time signature (C). The piece is in 4/4 time, as indicated by the '4' above the first measure. The notation uses various symbols: 'x' for cymbals, 'o' for hi-hats, and solid black notes for the drum kit. The piece is divided into measures, with measure numbers 9, 15, 21, 27, 32, 38, 43, and 49 marked at the beginning of their respective lines. The notation includes a variety of rhythmic patterns, including eighth and sixteenth notes, rests, and dynamic markings like accents.

55

61

67

72

78

83

88

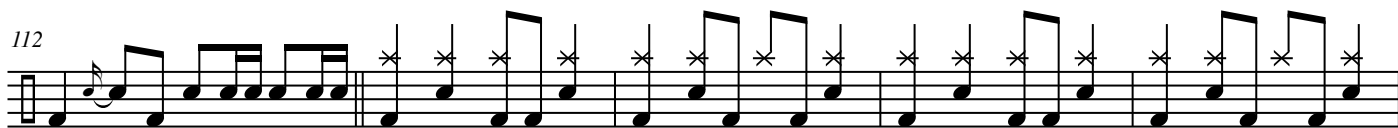
93

101

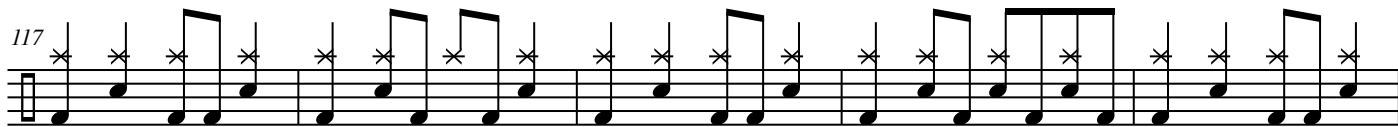
107



112



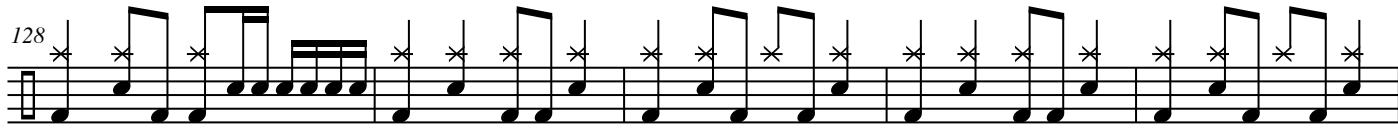
117



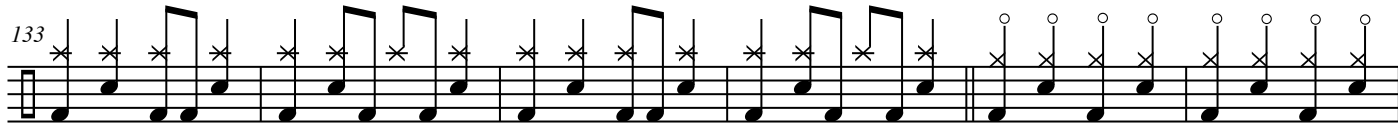
122



128



133



139

